

Adrien M & Claire B

54, quai Saint-Vincent
69001 Lyon
France

+ 33 4 27 78 63 42
contact@am-cb.net
am-cb.net

SIRET 477 489 264 00028
APE 9001Z TVA FR 31 477 489 264
LICENCE 2-1097537 LICENCE 3-1097538

Technical Rider

Acqua Alta – Ink black

STAGE PERFORMANCE

Technical contacts :

Technical Director :	Alexis Bergeron	+33 6 10 29 42 03	technique@am-cb.net
Stage Manager :	Romain Sicard	+33 6 76 47 51 13	romain@am-cb.net

Contacto Producción España:

Maria Gallardo - Ikebanah Artes Escénicas	+34 627 615 183	produccion@ikebanah.es
---	-----------------	------------------------

Contacto Distribución España:

Ana Sala - Ikebanah Artes Escénicas	+34 619 951 7 91 +34 960 090 504	anasala@ikebanah.es
-------------------------------------	-------------------------------------	---------------------

1- GENERAL NOTES

1.1 - Estimated duration: 55 minutes

1.2 - Our touring staff: 2 stage managers, 2 dancers, 1 multimedia artist, 1 company manager and 1 driver for fit-up day and load-out day.

1.3 - Touring vehicle: 13m3 truck (when performing in Continental Europe).

1.4 - The consistency in the quality of our video projections and visual effects should be guaranteed by a maximum darkness in the venue: we shall require full collaboration of the venue staff to reach this maximum darkness, in the interest of the performance.

1.5 - Audience seating plan and sightlines: our videos are projected on vertical gauzes and on the floor, as a consequence, no audience should be allowed to sit below stage floor level.

1.6 - The lighting/video and sound boards must be situated in the auditorium, with full visibility of the stage for all operators.

THIS TECHNICAL RIDER HAS FULL CONTRACTUAL VALUE.

FOR ANY QUESTION, PLEASE CONTACT THE TECHNICAL DIRECTOR.

NO MODIFICATION OR ALTERATION CAN BE MADE WITHOUT PRIOR APPROVAL OF THE TECHNICAL TEAM.

2-SET / PLANS / VENUE

(see Attachments 1 & 2)

2.1 – WE TOUR WITH THE FOLLOWING EQUIPMENT :

The set :

- Set elements: 2 tubular aluminium frames of 4,40x7m
- Set elements: 2 white Gobelin gauzes to fit the frames
- Specific cables to hang the frames
- White dance carpet, 6x7m
- Props (running)

2.2 – VENUE, PRODUCTION REQUIREMENTS :

2.2.1- Minimum dimensions of the stage (see plans attached, 1 & 2)

- 10m stage depth, from downstage edge of stage floor to last hanging bar (black drop)
- 10m width
- 10m proscenium opening
- 6,5m height to grid

2.2.2 – Set requirements :

- stage surface entirely covered with black dance carpet, set, taped and secured before our get-in
- black backdrop, depending on the backwall aspect
- no black masking required, unless for visual reasons: soft black legs to cover cables, machinery, etc
- 3 black borders, minimum 2m

2.2.3 – During fit-up :

- Genie (stage lift), going up to 7m minimum
- Stepladder, 3m minimum
- PVC black tape for our dance carpet (we bring the white tape)

3- LIGHTING / POWER REQUIREMENTS

(see Attachment 3)

3.1 – WE TOUR WITH THE FOLLOWING EQUIPMENT :

- 1 show computer operating lighting and video
- 1 ENTTEC Ethernet-DMX converter
- 1 Korg nano controller
- 12 LED hard strips to fit our set, with 12V adaptor and PowerCON connections

3.2 – VENUE REQUIREMENTS :

Your venue should provide:

- 10 profiles 1kW 613SX
- 1 profile 1Kw 614SX
- 6 profiles 1kW 713SX
- 7 profiles 1kW 714SX
- 1 PAR64 CP61
- 4 PC 2Kw
- 13 cyc lights 1Kw
- Dimmer Rack 46 x 3kW

3.3 – Minimum height below grid : 6,50m.

3.4 - DMX cables (for LED strips and LED profiles)

3.5 - A complete set of assorted gels should be provided by your venue. We only tour with a very small quantity of gels in case of emergency. Please contact us if you are not able to provide the referenced gels.

See attached plans for exact references.

4- SOUND

(see attachment : Patch list)

THE SHOW SOUNDTRACK IS A MIX OF PRE-RECORDED TRACKS AND A SCORE PLAYED LIVE BY THE BOARD OPERATOR.

A FULL-RANGE MULTI-SOURCE SYSTEM IS REQUIRED TO GET THE BEST SPATIALIZATION EFFECT. THE CONTROL BOARD MUST BE IN THE AUDITORIUM AND CENTERED TO ALLOW FULL VIEW OF THE STAGE.

4.1 – WE TOUR WITH THE FOLLOWING EQUIPMENT :

- 1 show computer
- 1 control iPad
- 1 audio interface
- 18-way multicore cable
- 1 stereo Jack-to-XLR cable

4.2 – VENUE, PRODUCTION REQUIREMENTS :

4.2.1 – Sound system with the following specifications :

- Front-facing professional sound system adapted to the auditorium, including front-facing subwoofers **placed on the proscenium in front of the tormentors**, with independent connection
- 2 stereo loudspeakers upstage, 12-Inch or 15-Inch, rigged with 2m cables - topping at a 4,4m height (upper side of the speaker), either side of the upstage gauze
- 2 feedback loudspeakers on stage, on stands, 12-Inch or 15-Inch, either side of the stage
- 2 stereo FOH/auditorium loudspeakers, 12-Inch or 15-Inch
- 2 stereo FOH/auditorium loudspeakers behind the audience, 12-Inch or 15-Inch
- Suitable cabling and amplification

4.2.2 – Sound booth and control :

- 1 large scale digital console 16in/16aux/16out, with 10in on rackfront, parametric equalizer (such as Yamaha QL1, Midas M32)
- 1 desk lamp

4.2.3 - Intercom :

- 1 channel guaranteed between boards and stage
- 2 cans for the boards, 1 for the stage

5- VIDÉO

5.1 - WE TOUR WITH THE FOLLOWING EQUIPMENT :

- 2 computers (one for the board used for lights as well, one flight-cased downstage right)
- 2 monitors
- 2 Ethernet switches
- 1 AirPort external router
- 3 VPs and corresponding cables to rig them in the flies
- 2 VPs + cover-boxes in the auditorium: they should be set close to the board operators or rigged if the grid allows HDMI cables to connect computers and VPs
- 1 Wacom display graphic tablet
- 1 type-6 RJ45 cable to connect board and stage computer: maximum length 80m

5.2 - VENUE, PRODUCTION REQUIREMENTS:

- **2 independent direct 230V/16A plugs on Stage Right - this is not for lighting**
- **2 desk lamps (one on stage, one for the board operator)**

6- COSTUME / COMPANY

6.1 - WE TOUR WITH THE FOLLOWING COSTUMES :

- 2 mens suits, cotton (pants, shirt, t-shirt, underwear)
- 2 female outfits, cotton (dress, underwear and pants, shirt, t-shirt)

6.2 - VENUE, PRODUCTION REQUIREMENTS:

- 2 dressing rooms, that we can lock up, with shower (or access to a shower close by)
- 2 large towels
- 4 small towels
- A few large water bottles or water fountain close to the stage
- Light catering would be very much appreciated

Please organize maintenance and costume cleaning after each performance.

7- LOGISTICS / STAFF

(see Attachment 5 – suggested planning)

7.1 – CONTINENTAL EUROPE TOUR, ROAD TRAVEL (less than 800 km from Lyon, France):

- We tour with a 13m3 truck + one driver, please provide safe parking
- Our truck gets in the day before fit-up, please plan full unloading upon arrival
- 2 stage managers arrive the day before fit-up, by train or truck depending on planning
- 3 performers (2 dancers, 1 multimedia artist) travel by air or train and will arrive on fit-up day or in the morning of show day, depending on distances and timetables
- Airport or station transfers and hotel accommodation are entirely paid for by the Venue

7.2 – INTERNATIONAL TOUR :

- Transport of the production by airfret
- The production should reach the venue one week before fit-up, please provide unloading and storage
- Our technical team (2 stage managers, 1 tour manager) arrives 2 days before fit-up
- Our artists (2 dancers, 1 multimedia artist) arrive the day before fit-up depending on timetables and distances
- Airport or station transfers and hotel accommodation are entirely paid for by the Venue

7.3 – STAFFING REQUIREMENTS :

7.3.1 - Build :

Fit-up and rehearsals require circa 4 shifts of 4 hours with:

- 2 electricians (3 shifts on day 1 of fit-up)
- 1 lighting co-ordinator (for fit-up, rehearsals, performances)
- 3 stage hands / riggers (2 shifts on day 1 of fit-up)
- 1 head stage manager (for fit-up, rehearsals, performances)
- 1 sound / video co-ordinator (for fit-up, rehearsals, performances)

7.3.2 – Striking the show :

One 4-hour shift after the last performance with:

- 1 lighting co-ordinator
- 2 electricians
- 1 head stage manager
- 3 stage hands / riggers
- 1 sound / video co-ordinator

7.3.3 – Costumes maintenance :

Please provide one shift of 4 hours after each performance:

- 1 dresser

In case we perform more than once, please provide full cleaning every other performance and overall general maintenance of the costumes. All costumes should be ready at least 3 hours before each performance.

Attachment 1

Fig. 1 : Schematic view of the set

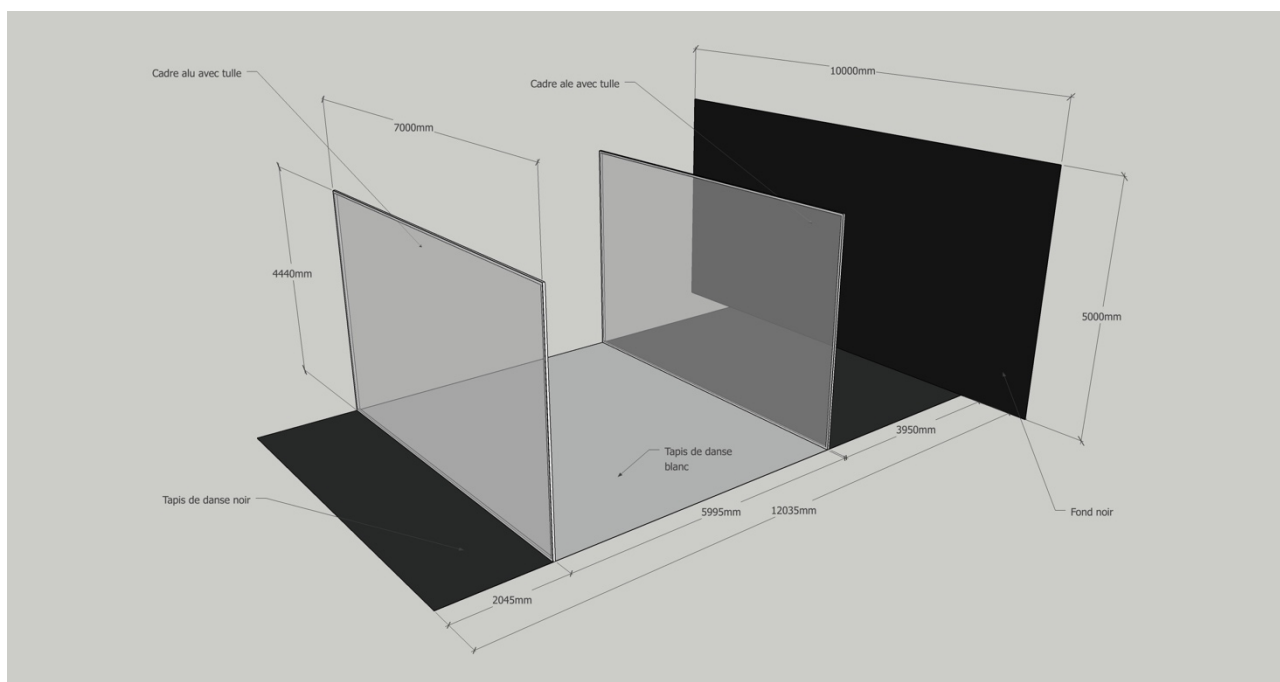


Fig. 2 : Picture of the set from front of house

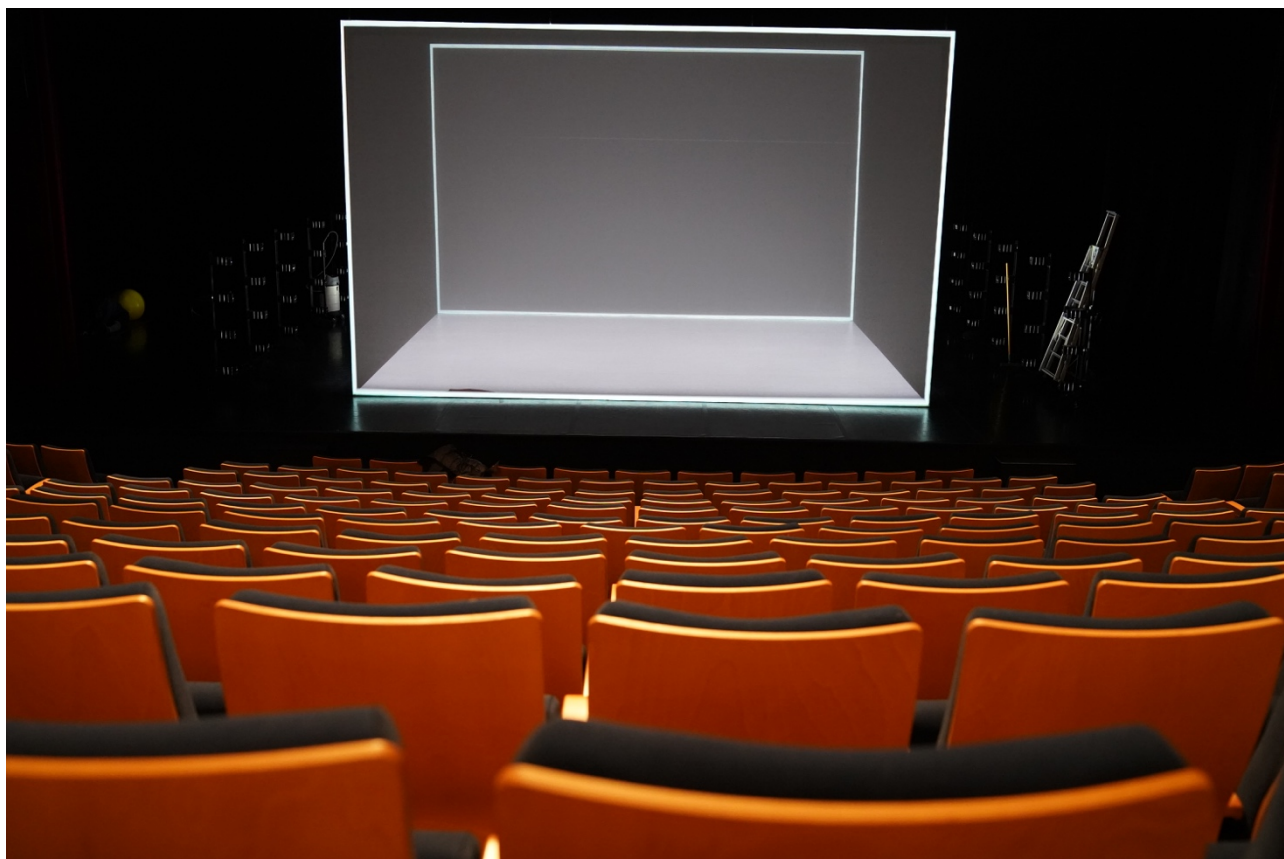


Fig. 3 : Pictures of the set

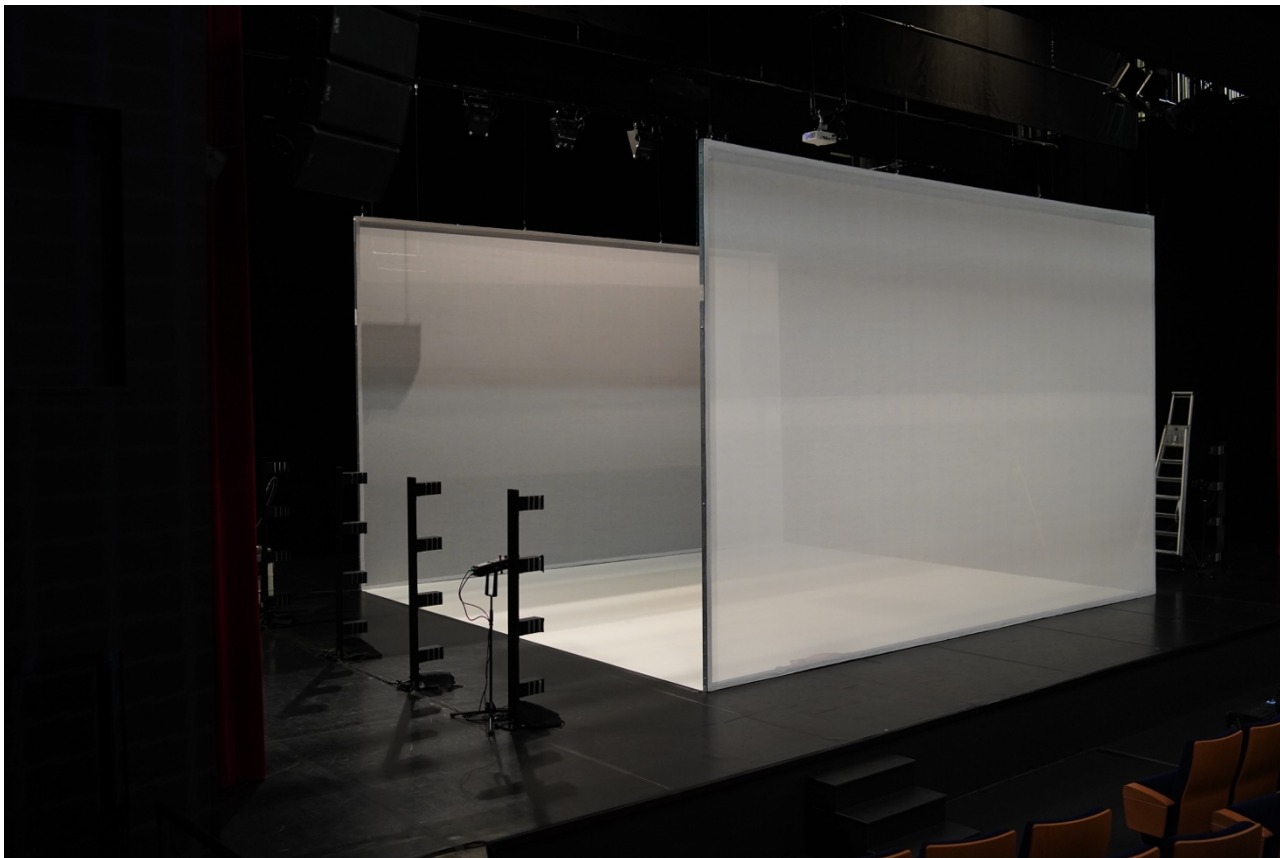
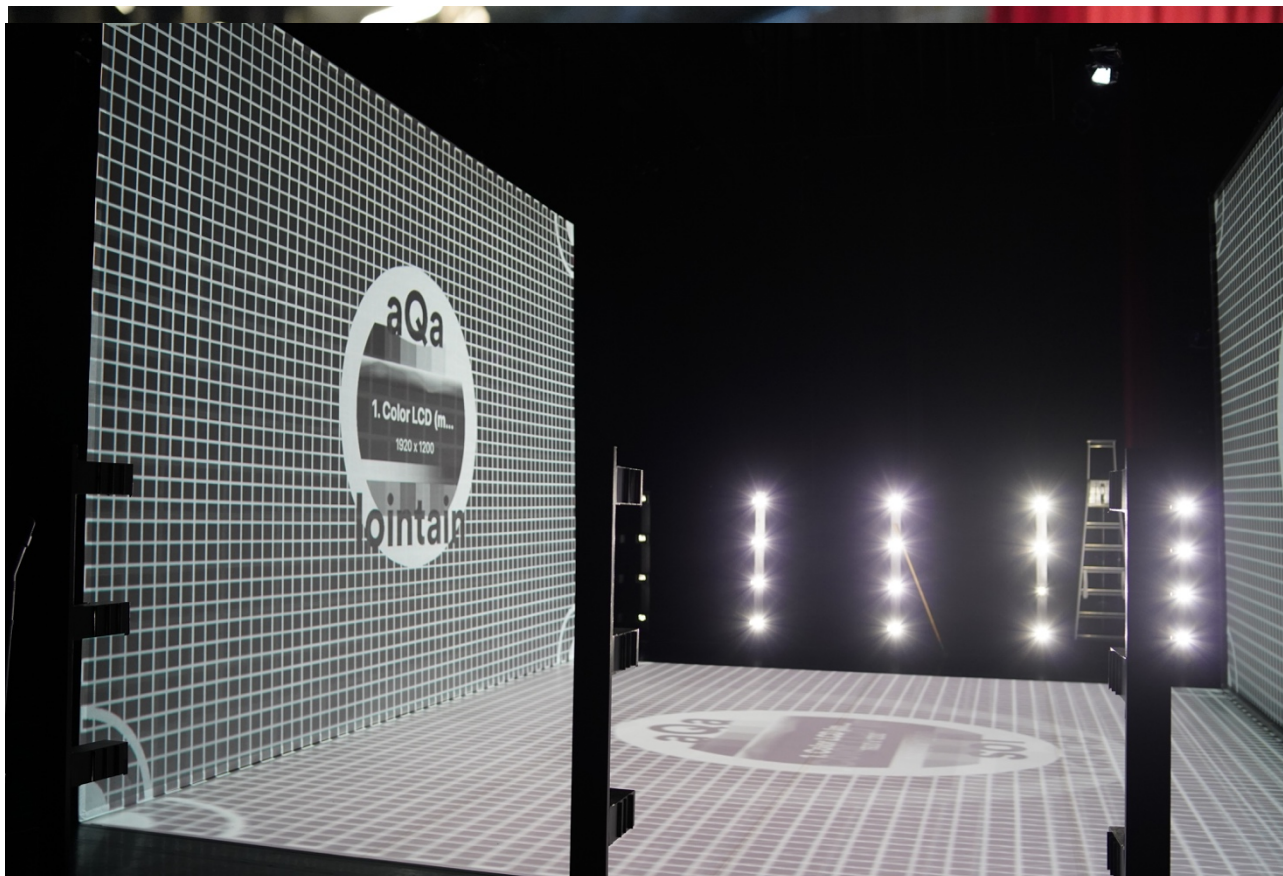


Fig. 4 : Pictures of the videoprojector's rig



Fig. 5 : LED hardstrips on stage



Attachment 2

Fig. 6 : Plan of the set, white dance floor, VPs and sound system.

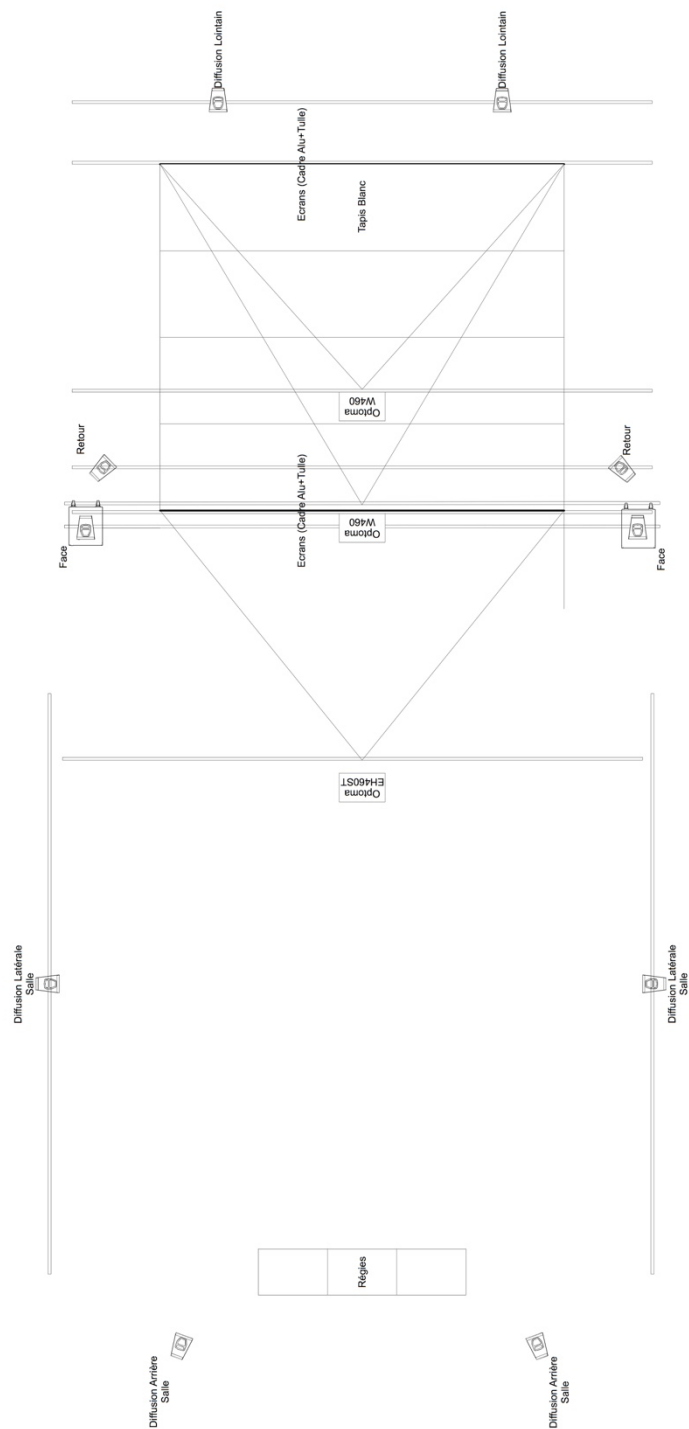
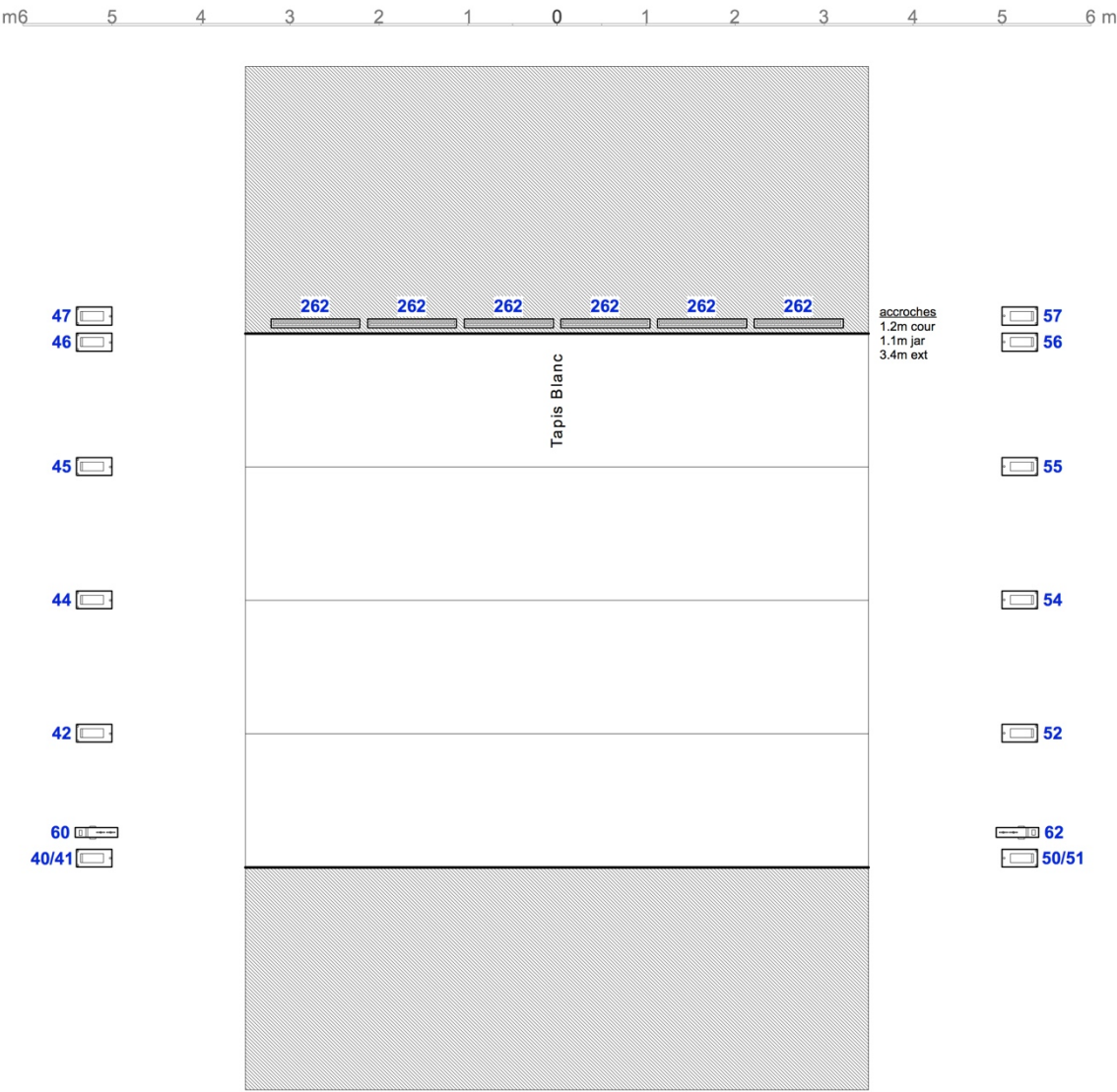


Fig. 7 : Lighting hanging plot – in the flies



Attachment 3

Fig. 8 : Lighting plot – on the floor



Attachment 4

Sound patch list :

Patch Son Acqua/Alta		
Input	Source	Type
1	RME out 1	XLR Balance
2	RME out 2	XLR Balance
3	RME out 3	XLR Balance
4	RME out 4	XLR Balance
5	RME out 5	XLR Balance
6	RME out 6	XLR Balance
7	RME out 7	XLR Balance
8	RME out 8	XLR Balance
9	RME out 9	XLR Unbalance
10	RME out 10	XLR Unbalance
Output	Output Name	Type
1	Diffusion Lointain Jardin	MIX 1/2
2	Diffusion Lointain Cour	
3	Face Jardin	MIX 3/4
4	Face Cour	
5	Diffusion Latérale Salle Jardin	MIX 5/6
6	Diffusion Latérale Salle Cour	
7	Diffusion Arrière Salle Jardin	MIX 7/8
8	Diffusion Arrière Salle Cour	
9	Retours Jardin	MIX 9/10
10	Retours Cour	
11	Subwoofers Jardin	MIX 11/12
12	Subwoofers Cour	

Audio card is situated at the boards: please provide cables for 10 outputs from the boards. We provide the 8-way multicore cable Jack-to-XLR, and a Stereo Jack-to-XLR to connect our 10 outputs.

Attachment 5

Planning

This is a suggested schedule based on a 20h30 curtain-up.

Pre-build:

We recommend using our lighting plot and sound patch plans and list.

Your black dance carpet should be set, secured and taped before we arrive.

T - 2 days

- Our technical team arrives
- Safe parking of our truck
- If possible, quick visit to the Venue to check prebuild
- If possible, unload truck

T - 1 day

09h00 -13h00 : Build and fit-up, lights, video and sound. Set screens and carpets.

- 1 lighting co-ordinator
- 2 electricians
- 1 head stage manager
- 3 stage hands / riggers
- Fly operator if required
- 1 sound / video co-ordinator

14h00 -18h00 : Continue video, lights and sound, fit-up

As above

18h00 - 19h00 : VP technical time with 1 sound / video co-ordinator

19h00 - 23h00 : Lighting session

- 1 lighting co-ordinator
- 2 electricians
- 1 stage hand / rigger

Performance day

09h00 - 13h00 : Sound check and computer checks (video tech time, stage to dark)

- 1 sound / video co-ordinator

13h00 - 14h00 : Dancers warm-up

14h00 - 18h00 : Running costumes prep + Rehearsals.

- 1 lighting co-ordinator
- 1 head stage manager
- 1 sound / video co-ordinator
- 1 dresser

18h00 - 19h00 : break

19h00 - 21h00 : show preset and performance

- 1 lighting co-ordinator
- 1 head stage manager
- 1 sound / video co-ordinator

On the first performance day, please make sure the dresser is available until the beginning of the show.

After the performance, 30 minutes circa to clear the stage.

Further scheduling, on performance days : we arrive at the venue circa 3 hours before curtain-up, except in case of emergency.

Costume maintenance : cleaning after performance, ironing and presetting the following day (1 dresser for cleaning and maintenance)

Striking the show after last performance

Duration : 3 hours

- 1 lighting co-ordinator
- 2 electricians
- 1 head stage manager
- 3 stage hands / riggers
- 1 sound / video co-ordinator

Attachment 6

Fireproofing certificate and receipts (original copies available upon arrival)



INSTITUT TECHNOLOGIQUE

INSTITUT TECHNOLOGIQUE

FCBA

Laboratoire d'essais feu

10 rue Galilée - 77420 Champs-sur-Marne

Laboratoire agréé par le Ministère de l'Intérieur et de l'Aménagement du Territoire

JO du 10 février 2007

PROCES-VERBAL DE CLASSEMENT DE REACTION AU FEU

D'UN MATERIAU PREVU A L'ARTICLE 5

DE L'ARRETE DU 21 NOVEMBRE 2002

ANNULE ET REMPLACE : CM - 16 - P - 068 /1

N° CM - 16 - P - 068/2

Page 1

Valable 5 ans à compter du mercredi 2 novembre 2016

Matériau présenté par :

Marque commerciale :

Description sommaire :

Type de support Tulles

Composition 100% coton

Masse surfacique de 51 g/m² à 107 g/m²

Coloris blanc, gris, noir, écru

Type d'ignifugation AFLAMMIT® KRE par foulardage

Nature de l'essai : Essai au brûleur électrique
Viellissement accéléré en enceinte climatique
Viellissement accéléré par nettoyage à sec

Classement : **M1**

Observations :

Durabilité du classement (l'annexe 22) : Non limitée a priori

Usage : Revêtement de murs tendus, voilages, rideaux, ... Conditions d'entretien : Nettoyage à sec

Compte tenu des critères résultant des essais annexés décrits dans le(s) rapport(s) d'essais N° 367160647/1, 367160648/1 e 367160649/1

Ce procès-verbal atteste uniquement des caractéristiques de l'échantillon soumis aux essais et ne préjuge pas des caractéristiques de produits similaires. Il ne constitue donc pas une certification de produits au sens de l'article L.115-27 du code de la consommation et de la loi du 3 juin 1994.

NOTA : Seules sont autorisées les reproductions intégrales et par photocopies du présent procès-verbal de classement ou de l'ensemble du procès-verbal de classement et rapport(s) d'essais annexé(s).

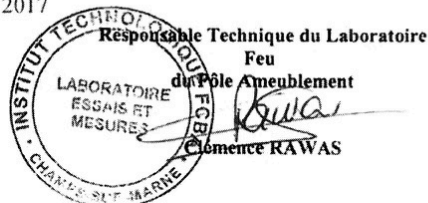
"Non valable pour toute application couverte par l'article AM 18 (Arrêté du 6 mars 2006)"

Champs-sur-Marne, le mardi 7 février 2017

Technicienne d'essais
du Laboratoire Feu

Clotilde ETIEMVRE

Siège social
10 rue Galilée
77420 Champs-sur-Marne
Tél + 33 (0)1 72 84 97 84
www.fcba.fr
Siret 775 680 903 00132
APE 7219 Z
Code TVA CEE : FR 14 775 680 903



Institut technologique FCBA : Forêt, Cellulose, Bois - construction, Ameublement

Facture N° FC0004344
Du 08/10/18

C3087

ATELIER AMCB
 54 QUAI SAINT VINCENT

69001 LYON

Référence dossier	N°TVA Intracommunautaire	Contact dossier
BPA DU 04/10/2018		ALEXIS BERGERON

Référence	Désignation	Qté	P.U Brut	Rem%	P.U.Net	Montant HT
	REF DOSSIER : AMCB					
SERRUR	CADRE ALU (50x50x2) DE DIMENSIONS : LARGEUR : 7M HAUTEUR : 5M Selon plan et informations fourni par le client	2,00	370,00		370,00	740,00
CONF	TULLE CONFECTIONNE EN TULLE GobelIN BLANC M1 1150cm 85g/m² LARGEUR : 7 M - HAUTEUR : 5 M En périphérie : Velcro velours 50mm noir au dos Inclus contrepartie velcro adhésif crochet noir Collé et riveté sur cadre	2,00	859,00	15%	730,15	1460,30
SERRUR	FABRICATION DES STRUCTURES EN ATELIER SERRURERIE REMISE EXCEPTIONNELLE SUR TAUX HORAIRE	1,00	2100,00	10%	1890,00	1890,00

Code	Base	Taux	Taxe	Total HT	Total TTC	Acompte	NET A PAYER
6	4 090,30 €	20,00%	818,06 €	4 090,30 €	4 908,36 €	0,00 €	4 908,36 €

Mode de règlement : VIREMENT

Echéance : 18/10/18

		Identifiant national de compte bancaire - RIB Banque Guichet N° compte Clé Devise 10096 18583 00081804601 77 EUR IBAN (International Bank Account Number) FR76 1009 6185 8300 0818 0460 177 BIC (Bank Identifier Code) CMCIFRPP
---	--	--

Toute commande suppose l'acceptation sans restriction des conditions de vente figurant sur notre tarif. Les marchandises livrées restent la propriété du vendeur jusqu'à leur paiement intégral. (loi n°80-355 du 12 mai 1980). Le règlement anticipé ne donne pas droit à escompte. Tout retard de paiement entraînera des pénalités de retard égales à 3fois le taux d'intérêt légal en vigueur ainsi qu'une indemnité forfaitaire pour les frais de recouvrement de 40 Euros.



TEVILOJ - S.A.R.L AU CAPITAL DE 140 000€ - RCS VIENNE 350 711 024 - NAF 4641Z - SIRET 350 711 024 00025 - N°TVA FR 80 350 711 024

Page 1