

# CINÉMATIQUE

## Technical informations

**RUNNING TIME** 1H15

### TEAM PRESENTATION TOUR

**Adrien Mondot** Director, video, juggling

**Satchie Noro** Dance

**Laurent Lechenault** Stage Sound engineer

**Jérémy Chartier** Stage manager, light operator

### CONTACTS

#### Management

Marek Vuiton

+33 4 27 78 63 42

[administration@am-cb.net](mailto:administration@am-cb.net)

#### Technical manager

Alexis Bergeron

+33 6 10 29 42 03

[technique@am-cb.net](mailto:technique@am-cb.net)

[alexis.bergeron@free.fr](mailto:alexis.bergeron@free.fr)

#### Stage manager

Jérémy Chartier

+33 6 42 42 74 77

[jeremy.chartier@yahoo.fr](mailto:jeremy.chartier@yahoo.fr)

### SUMMARY

**page 1** Presentation of the team and contacts

**page 2** Home, working time, staff requests, dressing room and costumes

**page 3** Scenography

**page 4** Stage requests and auditorium constraints

**Page 5** Video requests

**page 6** Sound requests

**page 7** Light requests

**page 8** Light plot

**page 9** Light patch

**page 10** Equipment to provide

## HOME

The crew arrives the two days before the premiere (D-2).

## WORKING TIME

No pre-setting.

The day before the premiere (D-1): setting during **3 work periods** (3x4 hours)

Day of the premiere (D): **3 work periods** = 1 work period (1x4 hours) in the morning + 1 work period in the afternoon for a rehearsal + a provision of the scene is necessary for the training of artists, two hours before the show (it does not require the presence of technicians) + show

## STAFF REQUESTS

Video: one video master

Sound: one sound master

Stage: one stage manager and one technician

Light: one master electrician and one technician

**NB / We need a stage master to make three manipulations during the show.**

	D-1 morning	D-1 afternoon	D-1 evening	D morning	D afternoon	D evening
Stage master	X	X	(X)	X	X	X
Stage technician	X	X				X (to strike)
Master electrician	X	X	X	X	X	X
Light electrician	X	X	X			X (to strike)
Video & Sound master	X	X		X	X	X

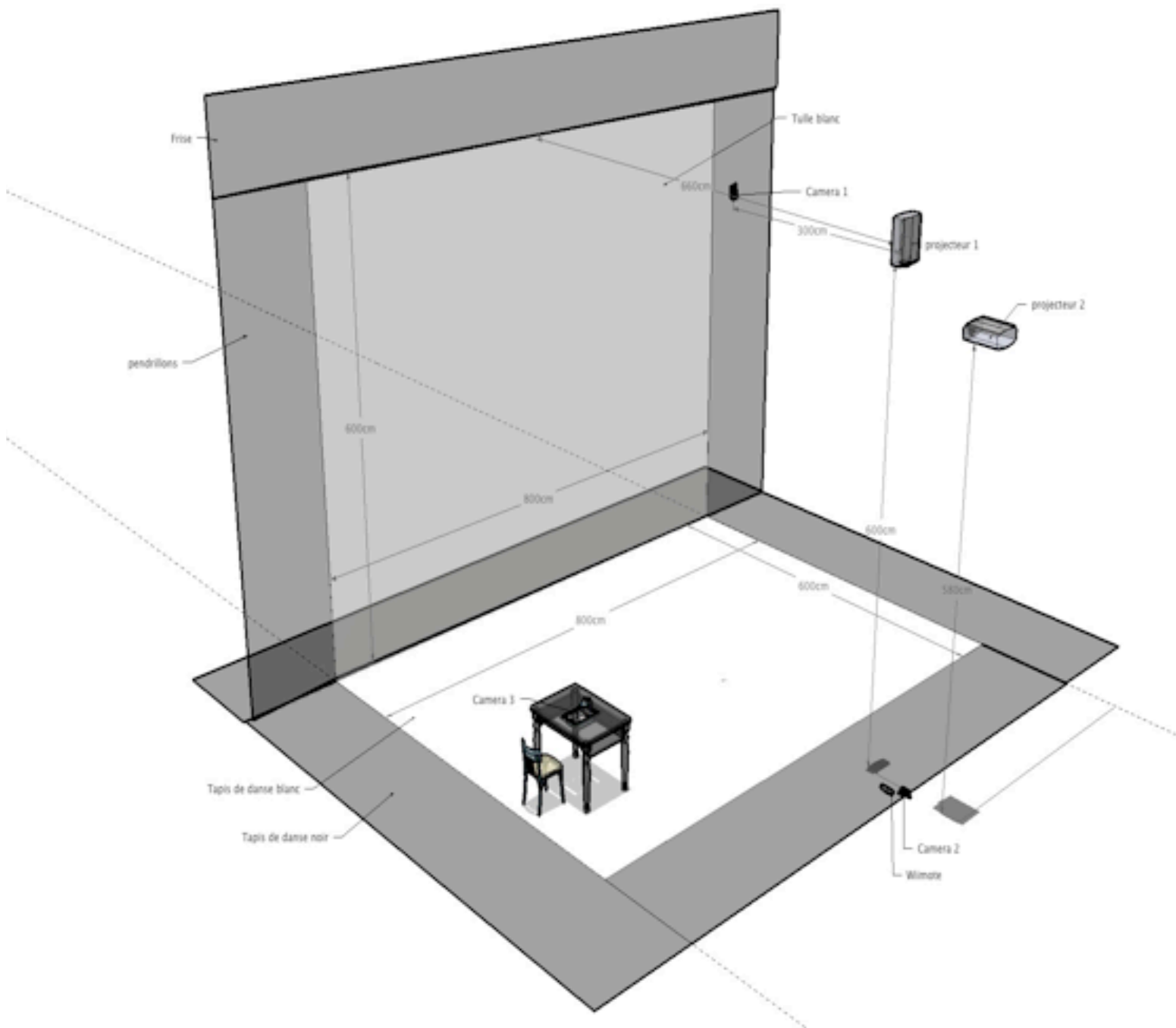
## DRESSING ROOM

Two dressing rooms for four persons equipped with sinks, toilets, showers, mirrors, chairs, iron and drinks (water, fruit juices, sodas, tea, coffee ...), chocolate, biscuits and fruits ...

## MAINTENANCE COSTUMES

A costume maintenance is required between each day of show.

# SCENOGRAPHY



## STAGE REQUESTS

**Minimum height under pipes:** 6 m.50

### **Minimum size stage:**

14 m opening wall to wall.

10 m proscenium opening.

10 m depth including:

1 m in front of the white dance floor

6 m stage space (white dance floor)

3 m behind the white gauze (scrim)

### **Stage space white dance floor:**

8 m opening.

6 m depth.

The rest of the stage will be black.

### **Curtains :**

Using a white gauze (provided by Co ).

Black leg and border setting (Italian) divided in 4 plans before the gauze

### **We need:**

10 legs (5x2),

5 borders and

**1 border between 0,50 m and 1,20 m** (this border is very important).

The background stage must be black.

## CONSTRAINTS ROOM

The show includes video projections on the ground then all the rows that are lower than the level of the stage are not accessible. **The first row must be at the top of the stage.**

## VIDEO REQUESTS

We use a computer on the stage and two video projectors (provided by Co), the VP1 for the ground, the VP2 for the gauze:

The VP1 (vertical / ground):

Height: between 5.60 M. and 5.80 M.

Distance to the gauze: 6.60 M.

The VP2 (horizontal / gauze):

Height: between 5.50 M. and 5.70 M.

Distance to the gauze: 10.40 M. or between 13.10 M. and 15.40 M.

We need power supply, hooks for two video projectors.

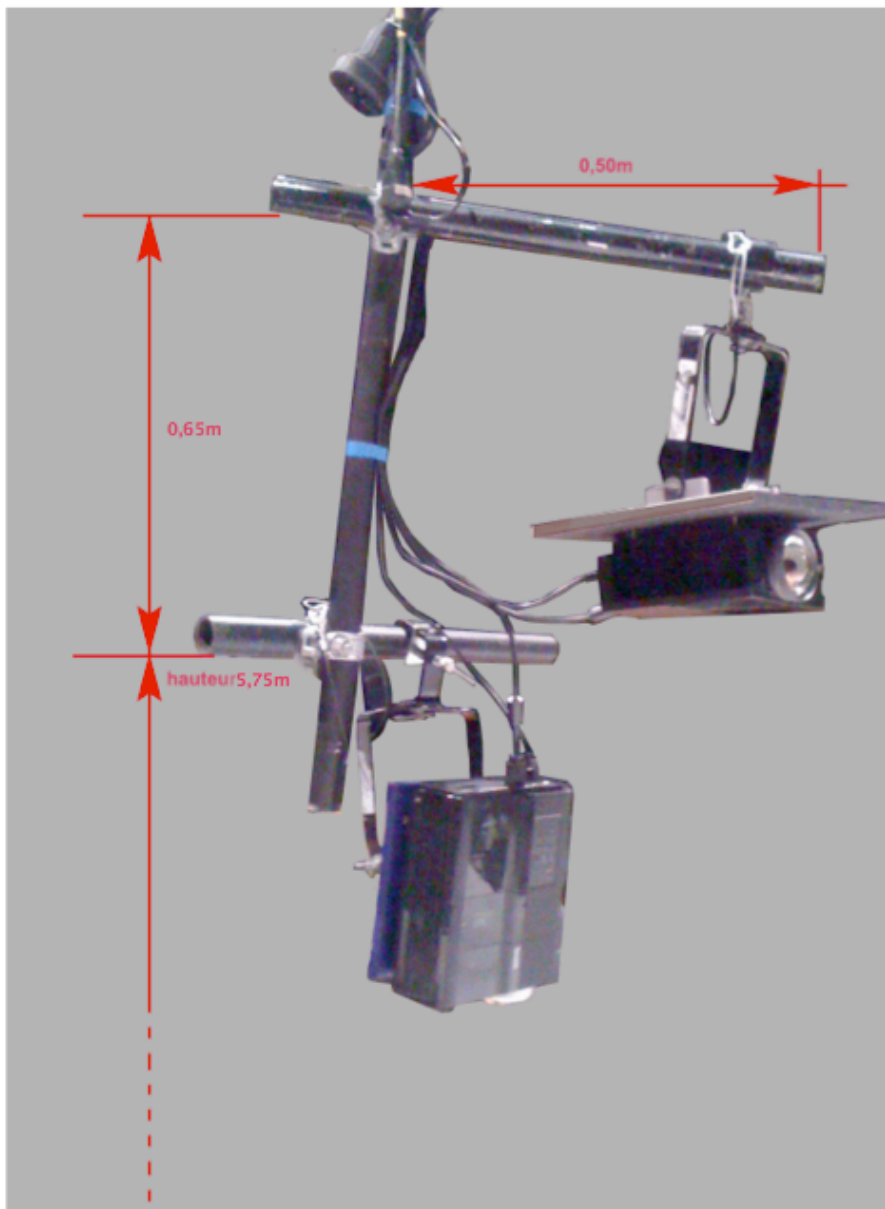
We need power supply on the right side for the stage computer.

The video projectors are plugged on the stage computer, we have two vga cables (length 20 M.)

**Maximum distance between the stage computer and the VP1: 20 M. and the VP2: 20 M.**

The stage computer is plugged to control computers, we have an ethernet cable RJ45 (length 40 M.)

**Maximum distance between the stage computer and the desk control: 40M.**



## **SOUND REQUESTS**

### **Desk control: In the auditorium.**

- 1 sound mixer 12/6/6/2\*
- 5 auxiliary sends\*
- 6 graphics equalizers\*
- 4 dynamics comp./lim.\*
- 2 stereo lines delays\*

\* It is possible to replace the analog kit with a digital console like Yamaha DM1000, M7CL, LS9, 01V96

- 6 DI box only if the console doesn't have line inputs

### **Power:**

The sound system is organized in 3 delayed sound plans:

Upstage:

- 2 speakers on stand (like L-Acoustics MTD 112 or Nexo PS10), stereo line.

FOH: 4 speakers or more like L-Acoustics MTD115 and 2 sub-bass speakers\*

like L-Acoustics SB 218, stereo line.

Auditorium:

- 2 speakers\*\* at the bottom like MTD 112, stereo line.

\* sub-bass should be separated (on a send auxiliary)

\*\* Additional speakers may be required, depending on the size of the room (see our sound manager)

### **Sound accessories:**

4 stands speakers, height 1.60 M.

### **Intercom:**

Intercom stations between the control room and the stage.

## **LIGHT REQUESTS**

### **Desk control:**

#### **In the auditorium beside the sound control.**

- Lighting board with cues and memories and 36 channels minimum,dmx protocol.

### **Power:**

36 dimmers 2kW

### **Spotlight equipement:**

#### Profile spotlights

x11 Type:Robert Juliat 613sx or ADB dvw105

Focus: 28/64°

Watts:1000

x5 Type: Robert Juliat 614sx or ADB dw105

Focus: 16/35°

Watts:1000

x2 Type: Robert Juliat 713sx or ADB dvw205

Focus: 29/50°

Watts:2000

#### Flood lights (Cyc lights)

x6 Type: Robert Juliat horus 850 or ADB acp1001

Watts:1000 or 1250

#### Plano convexs (PC)

x7 Type: Plano convex (with barndoors)

Watts:1000

#### PAR 64 spotlights

x5 Type: PAR 64 CP60

Watts:1000

### **Gel:Lee Filters (L) and Rosco (#):**

Profile spotlight 1kW: 9x L202; 4x L201; 3x L048; 1x #132.

Profile spotlight 2 kW: 1x L017; 1x L711; 2x #119.

Plano convex 1kW: 5x L202; 5x L228; 2x #132.

Par 64 spotlight: 2x L048; 1x L711.

Cyc light: 3x L354; 2x L058; 1x L135.

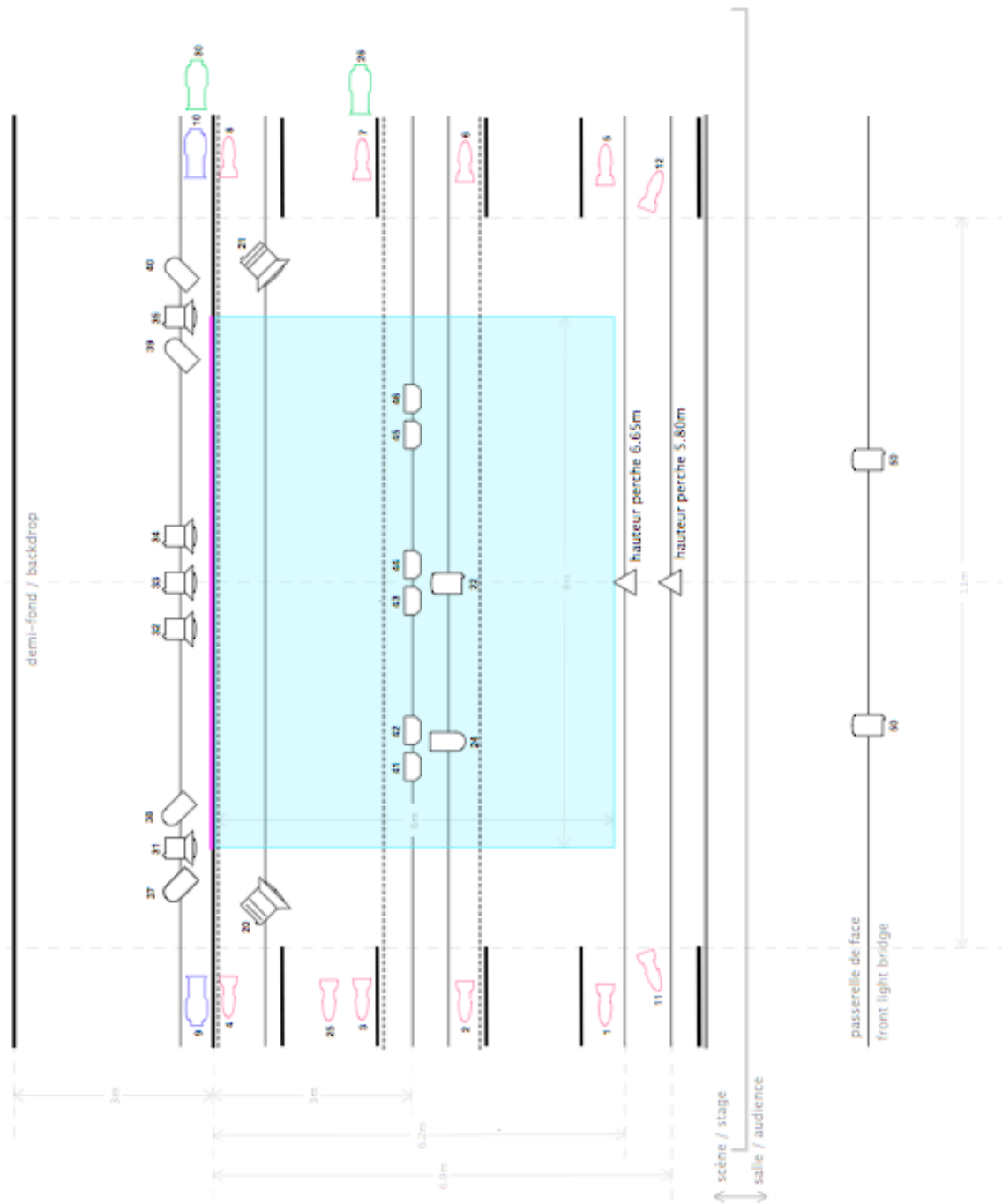
### **Light accessories:**

2 lightspot stands, height 1m.60

13 floor stands

Black aluminium tape, blackfoil.

# LIGHT PLOT



Cie AM-CB	CINÉMATIQUE
Janvier 2012	IMPLANTATION DE BASE
A3	vue longitudinale
1/100e	

	FC 1KW		voilet 1kW
	FC 2KW		voilet 2kW
	PAR64 CPFC		
	eyecode		
	décoque Juliet 6135X sur platine		
	décoque Juliet 614 18°-30° sur platine		
	décoque Juliet 614 18°-30° sur pied		
	vidéoprojecteur (fourms par la cie)		
	pendrillon		
	frise		
	tulle (fourms par la cie)		
	tapis de danse blanc (fourms par la cie)		



## LIGHT PATCH

n°	Spotlight	Filter
1	découpe Robert Juliat 1kW 613	L201
2	découpe Robert Juliat 1kW 613	L201
3	découpe Robert Juliat 1kW 613	L201
4	découpe Robert Juliat 1kW 613	L201
5	découpe Robert Juliat 1kW 613	L202
6	découpe Robert Juliat 1kW 613	L202
7	découpe Robert Juliat 1kW 613	L202
8	découpe Robert Juliat 1kW 613	L202
9	découpe Robert Juliat 1kW 614	L202
10	découpe Robert Juliat 1kW 614	L202
11	découpe Robert Juliat 1kW 613	L048
12	découpe Robert Juliat 1kW 613	L048
/	/	/
20	PC 2kW fresnel + volet	L017 + #119
21	PC 2kW fresnel + volet	L711 + #119
22	PC 1kW	L053 + #119
/	/	/
24	PAR64 CP60	L711
25	découpe Robert Juliat 1kW 613	L048
26	découpe Robert Juliat 1kW 614	L202
/	/	/
30	découpe Robert Juliat 1kW 614	L202
31	PC 1kW	L202 + L228
32	PC 1kW	L202 + L228
33	PC 1kW	L202 + L228
34	PC 1kW	L202 + L228
35	PC 1kW	L202 + L228
36	PAR64 CP60	L048
37	PAR64 CP60	-
38	PAR64 CP60	L048
39	PAR64 CP60	-
/	/	/
41	cycliode	L354
42	cycliode	L058
43	cycliode	L354
44	cycliode	L134
45	cycliode	L354
46	cycliode	L058
/	/	/
50	PC 1kW	#119

## EQUIPMENT TO PROVIDE

We need a table, 17x AAA batteries + 4 R20 batteries and a screen computer (vga connection).

We need a cleaning brush with a width of 60 cm

About the table, we need a black wooden table, weight: ~ 6 KG

Dimensions:

1.19 M.(width)x 0.60 M.(depth)x0.74 M.(height), and supporting the weight of 130 kg.

In France, we use an **IKEA table**, it is really better to use this model :

LEKSVIK Black Ref : 801.334.02



**LEKSVIK**

Bureau, noir

**€ 159**

Référence de l'article :801.334.02

Bois massif, un matériau naturel et solide.  
Tiroir avec arrêt le maintenant en place.

