

LOO



2017 "FETEN AWARD" TO THE BEST SHOW FOR CHILDREN.

2016 "DRAC D'OR" TO THE BEST SHOW FOR CHILDREN AT FIRA TITELLES DE LLEIDA.



Ponten
Pie



WHO IS PONTEN PIE?

Ponten Pie is a company founded and directed by the actor Sergi Ots. The company is a platform for this artist to carry out personal projects related to the performing arts. This is the personal and independent space for creation he was searching for.

Ponten Pie's goal is to create unusual performance and staging, reaching out to the audience by directly involving them in the story. In Sergi's creations, the visual aesthetics works in a powerful way. He gives the characters a dramatic truth, in the text as well as in their body's performance, turning each piece into an authentic and characteristic small world. In Ponten Pie's projects, different theatre disciplines combine and speak through a new theatrical language.





The company has been awarded with the following:

2018 "Best show award" at International Theatre Festival Faces Without Masks in Macedonia to ÀRTICA.

2017 "Premio FETEN" for the best children show at FETEN to LOO.

2016 "Drac d'or" for the best children show at Fira de Titelles de Lleida to LOO.

2014 "Drac d'or" for the best show concept at Fira de Titelles de Lleida to ÀRTICA.

2013 "MORITZ award" for the best show at FiraTàrrega to ÀRTICA.

2012 "CREA" by Trapezi Reus to the cinematic project NORDUD.

2012 "Drac d'or d'interpretació" at Fira de Titelles de Lleida to COPACABANA.

2010 "Aplaudiment a la creació emergent" FAD awards Sebastià Gasch to COPACABANA.

2009 "NOF" Festival Escena Poblenou to COPACABANA.

2009 "Laboratoris de Creació" de FiraTàrrega to COPACABANA.





LOO ARTISTIC TEAM

Original idea and direction: Sergi Ots

Assistant to director: Emilie De Lemos

Script: Sergi Ots and Emilie De Lemos

Actress: Natàlia Méndez

Set design: Adrià Pinar and Sergi Ots

Set construction and artifacts: Adrià Pinar and Pau Seguí

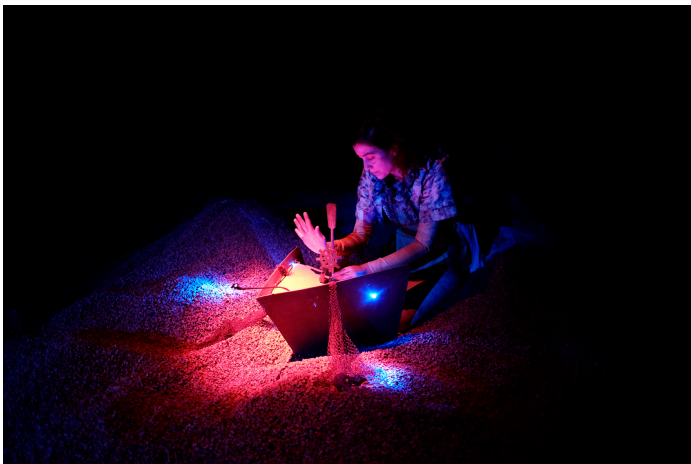
Costume design: Marcel Bofill and Nahoko Maeshima

Lights: Adrià Pinar

Photography: Sergi Ots

A Production between:
Ponten Pie & Festival El Més Petit De Tots

With support from:
ICEC. Generalitat de Catalunya /
Teatre Sagarra de Santa Coloma de Gr. /
La Sala Teatre Miguel Hernández de
Sabadell.





PRESENTATION OF THE PROJECT

LOO is the third show of the company, a project born thanks to the proposal from "Festival El Més Petit De Tots", a festival that devotes its program to scenic proposals intended for children between the ages of 0 to 5, to "Ponten Pie" to undertake the self-produced show in the 2015 edition of the festival. A project that has continued in the line of the company, an unconventional show where actors and audience share the same space. Where the visual poetry of the company could have a presence and offers an unusual, quality theatrical proposal for the younger age groups.

Due to the times we are living, we have adapted the set because the audience could enjoy the show with the distances and the sanitary measures dictated at this moment. So part of the public will seat around the set in the stage and the other part, will seat in the orchestra seats, as long as the theatre has an inclined orchestra. In this way, the audience can still enjoy a direct and close experience, keeping to theatres a viable capacity.

LOO is a play of great visual power, and minimalist, where the plasticity evokes unprecedented images of the desert and its formation.

Welcome to LOO.



THE SHOW

"Loo is a strong, hot and dry wind that runs on summer evenings from the western region of the Indo-Gangetic plain. It creates itself with extremely low levels of humidity and high temperatures. Loo also dehydrates and dries vegetation."

LOO, besides being the name of a wind, is the name of our main character, the humanization of this element. The performance shows a vision of its hard work to push the sand dunes across the desert, devastating wetlands, seas and oceans that are in its path, leaving ships paralysed amidst a sea of sand, eliminating forever its ability to sail. Intended for children from 2 to 5 years old, the show is an unconventional and sensorial proposal, without text. It is developed as a stage show that takes 30 minutes where the spectator is located in the middle of the scene in the stage and in the orchestra. The stage minimum needed dimensions are 9 m width x 9 m length. The set is like the skeleton of a sunken ship in the sand of the desert.

A poetic and unknown document that takes a closer look on how and why the wind can form a desert.

TEASER: <https://vimeo.com/147638283>

TOUR

LOO has been in several national and international festivals like Festival El més petit de tots, Fira de Titelles de Lleida, Fira Tàrrrega, FETEN, Festival Grec, Mon mouton c'est un lion, MOMIX, Imaginate, Zigu Zajg and Imaginique and has been touring for a lot of countries like Spain, France, UK, Netherlands, Germany, Switzerland, Finland, Malta, China, Japan or Singapore.



THEATRE CRITICS HAVE SAID:

"The company Ponten Pie, directed by Sergi Ots, gets an empathetic and assertive result that not only achieves to captivate the interest of the youngest ones; besides, it invites them to go on watching, touching, smelling, feeling, experimenting.

Loo has been a brief, sensorial and exciting gift that has left on us a big smile in our bodies and a will to get inside a boat and play, play with all the elements until transform them in pure poetry. This project is an intimate, playful and oneiric journey that allows enjoying to all family of the best visual theatre for children."

Irma Borges in Titeresante

"...it is going, for sure, stimulate (at children) their senses and their imagination through, above all, a delightful aesthetics stained by browns and blues that makes fly the fabrics and touch the sand in a melodic way. Only need to catch the silence and take a look into the faces of the young ones and the will of touching the sand -pieces of cork- with their hands, to prove that they are hypnotized. The fact of being seated inside the set -that evokes a ship-enhances the proximity and the immersion in this poetical adventure that captivate them during 30 minutes."

Núria Cañamares in Recomana.cat



TECHNICAL DETAILS

This data sheet forms an integral and essential part of the performance contract. The presence of a responsible and informed person that is aware of all of the technical details will be required, from the time of arrival of company staff until the end, when everything is taken down. The technical conditions herein described refer to the needs of the show. In case these conditions cannot be held, we ask to contact the production manager or head technician of the company.

SET UP AND TAKE DOWN

30 min. unloading = 2 people unloading/loading +2 Company staff.

Set up 5h = 1 light and sound technician, 1 machinery technician
+2 Company staff.

Take down 2h = 2 people unloading/loading +2 Company staff.

RUNNING TIME

30min (without interval).

CAPACITY

It depends on the dimensions of the theatre and the number will be arranged previously with the company.

SET DETAILS AND STAGE

Loo is a show where the audience sits in the stage around the set and in the orchestra. The set has horseshoe form evoking the shape of a boat. There are benches where the audience sits and a central area plenty of cork where the action takes place. Also, a mast with its own iron foot which is placed in the back of the cork area, a box full of cork which is used to do a rain effect during the show and it is hanged in the bars and, a rope fixation which is placed next to the technician table. The technician does two movements during the show and that is why necessary his table to be at the same set level and close to it.



Stage needs:

- Theatre with an inclined orchestra.
- Minimum stage dimensions: 9 m width x 9 m length.
- A table with black cloth to place the lighting control board + sound control (computer + table).
- Weights (70kg) to fix the ropes portable fixation and the basis of the mast.

LIGHTING

26 Dimmer channels

13 PC 1KW

5 PROFILES 15°-35° 1KW+2 IRIS

5 PROFILES 25°50° 1KW

3 PAR 64 (lamp CP62/num.5)

3 Channels on floor level to connect fans brought by the company.

SOUND

4 self-powered speakers (in case of a non-conventional space, we can use the PA) at stage level with tripod.

Stereo audio signal must be at stage level (sound control); Jack or XLR connection.

OTHER

Light and sound are controlled by a technician from the stage, therefore it will be necessary to have a dmx signal (5pin) and sound input at this location.

The company brings the sound table, the computer, Enttec USB Pro. The show runs on "QLAB".

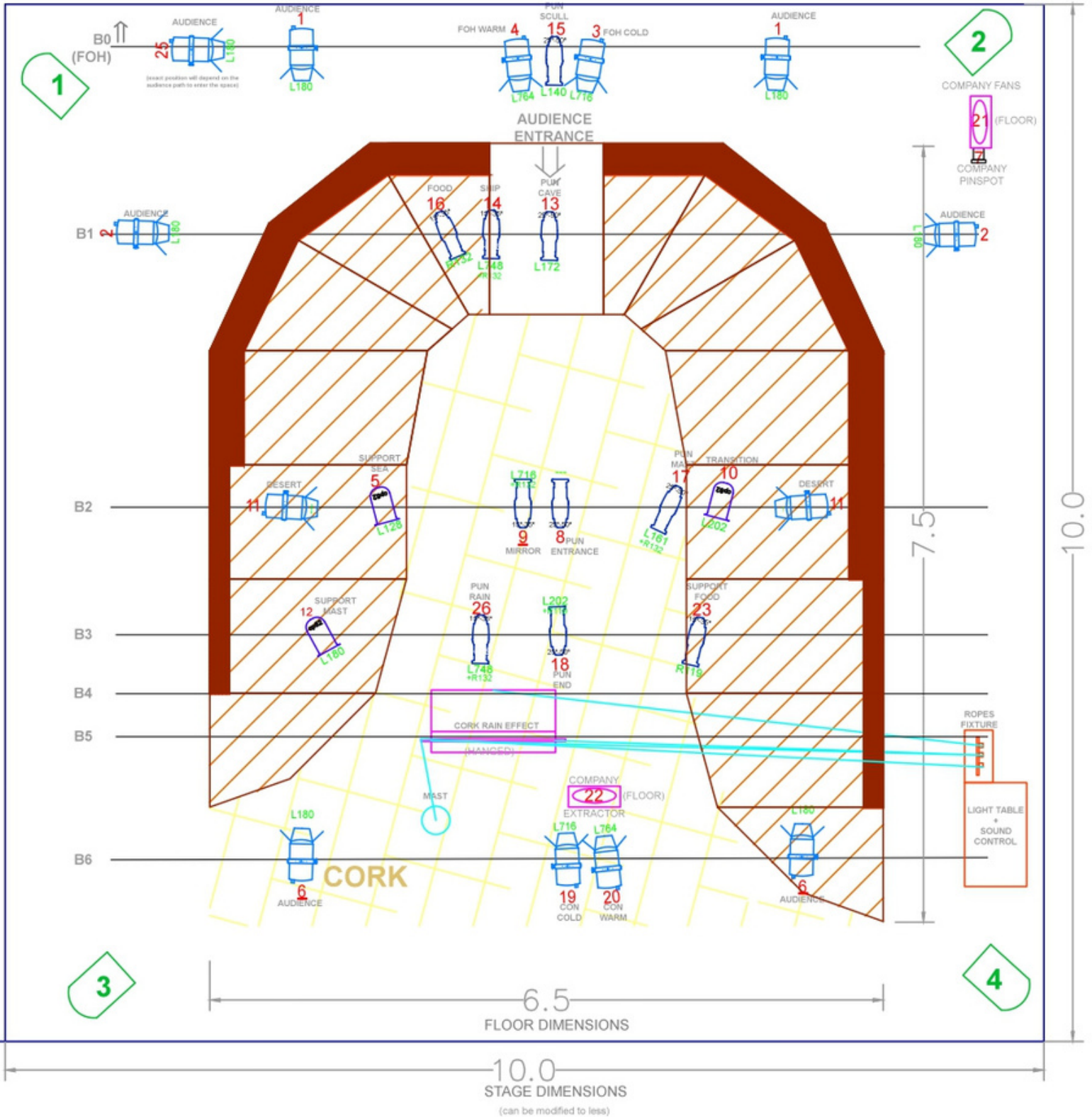
A generic lighting plan is available at the end of this document.

SET DETAILS





LIGHTING GENERIC PLAN





Contact



Ana Sala Montoro

Tel. +34 960 090 504 • Mòvil +34 619 951 791

anasala@ikebanah.es

Calle Navellos, 1-11ª • 46003 Valencia (Espanya)

www.ikebanah.es

With support from:



Generalitat de Catalunya
**Departament
de Cultura**