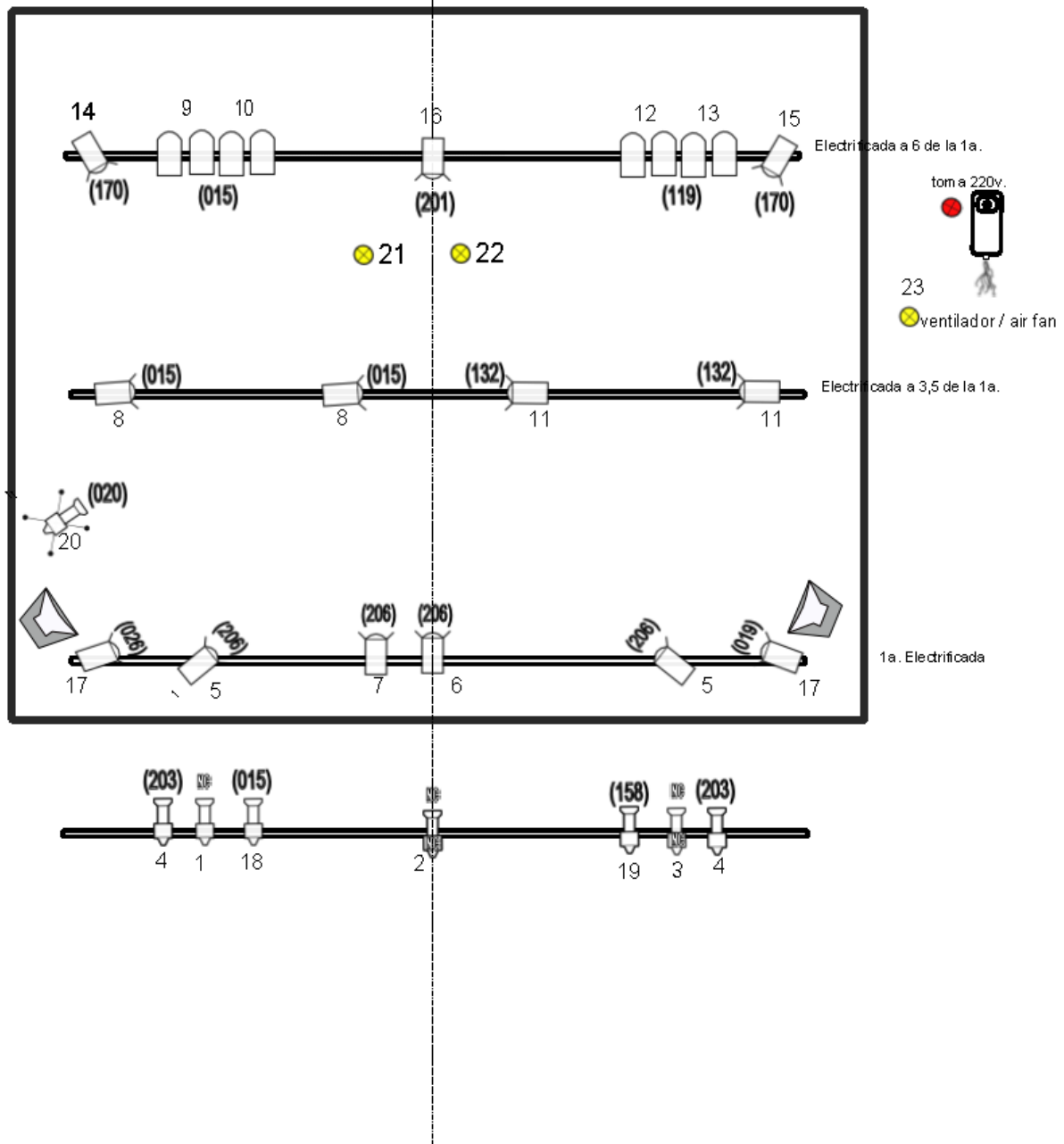


Technical information

| | |
|--|--|
| LANGUAGE | NO TEXT |
| AUDIENCES | All audiences, from 5 years |
| MAXIMUM RECOMMENDED AUDITORIUM CAPACITY | Schools: 250 – 300 people Other: 350 – 400 people |
| ACTORS ON STAGE | 2 |
| STAFF ON TOUR | 3 (or 4): 2 artists + 1 technician (+ 1 road manager) |
| DURATION | 1 hour |
| SET-UP / GET-OUT | 4 hours / 1 hour |
| STAFF PROVIDED BY ORGANISER | 2 electricians |
| LOAD-IN AND DISCHARGE | When loading is direct to the stage, staff will not be necessary for these tasks. In any other case it will be necessary to agree on it previously with the company. |
| OPTIMAL STAGE SIZE | Salle à l'italienne, 8 x 6 meters |
| THEATRE FACILITIES | Space technically equipped with sound and light. Possibility to use the company's equipment (in which case, consult financial conditions). NOTE : In order to hold up the structure of the set, you must provide an 80kg weight per side. (2 sides: see picture below) |
| SOUND EQUIPMENT | P.A. (stages, wiring, etc...) sufficient for the space. 2 monitors. Table of control to connect two stereo devices (a minidisk and a Cd. of the Company) |
| DRAPERIES | Black curtains |
| VEHICLES | The company will access for the load and discharge with a Long Volkswagen Model LT. Registration: 4282 DMB, for which parking lot has to be facilitated |
| DRESSING ROOMS | Dressing room or space authorized for both actors in order to use as a locker room. |
| LAUNDRY SERVICE | Every 2 shows (see picture attached for details) |
| SECURITY AND ORGANIZATION | It is necessary the presence of a person responsible for the event in order to indicate the beginning, as well as to coordinate and to solve any aspect that may appear beyond the artistic section, responsibility of the company (ex. location of chairs for the public; security of the installed elements; coordination with other events ...) |

Xirriquiteula Teatre
PAPIRUS



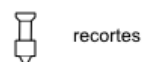
Leyenda



PC 1kW



Fresnel 1kW



recortes / profile / découpe



PAR 64 / CP 60 o 61



PAR 64 / CP 62



circuito en el suelo / circuit over the stage / sur scène (dimmer min. 220V/10A)



línea directa para m.humo (220V/10A) / socket for smoke machine / socket pour machine a fumée

3,4,27...

números de canales / channels



filtros / filters



foco con pie sobre el escenario / projector over the stage / projecteur sur scène



máquina de humo / smoke machine / machine fumée



altavoz/speaker: P.A.



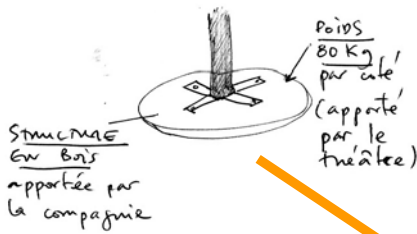
altavoz/speaker: monitor

Técnicos:
 Daniel Carreras
 93 389 43 87
 dani@obsidiana.cat

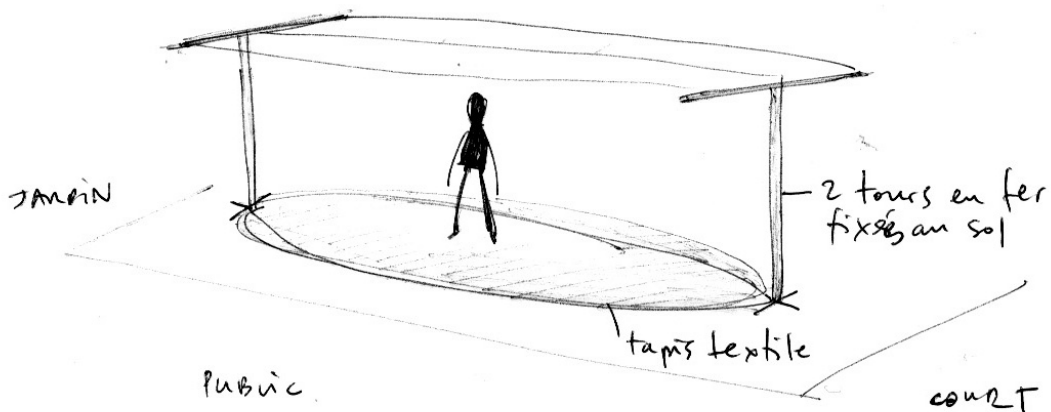
Set structure

The theater must provide an 80kg piece for each side of the structure.

SYSTÈME DE FIXATION



LE DECON



Laundry Service

In the picture you can see the 2 costumes used in every show.

The theatre must provide a laundry service every 2 shows (4 costumes in total).

