



Adrien M & Claire B

Adrien M & Claire B
54, quai Saint-Vincent
69001 Lyon
France

contact@am-cb.net
am-cb.net

SIRET 477 489 264 00028
APE 9001Z TVA FR 31 477 489 264
LICENCE 2 - PLATESV-R-2022-005803 & LICENCE 3 - PLATESV-R-2022-005802

La Familia
92 rue Haxo
75020 Paris
France

contact@la-familia.fr
la-familia.fr

SIRET 494 551 120 00061
APE 9001Z TVA FR 57 494 551 120
ENTERTAINMENT LICENCES: L-R-2020-7747 / L-R-2020-7748

Piano piano

By babx + Adrien Mondot
Work created in October 2023

Technical rider

update : 18/03/2024

Technical contacts

Technical management:
Technical direction:

Clément Aubry
Raphaël Guénot

+33 6 78 74 80 39
+33 6 84 60 42 74

aubryclem@gmail.com
technique@am-cb.net



Adrien M & Claire B

Adrien M & Claire B
La Familia

contact@am-cb.net
contact@la-familia.fr

adrienm-claireb.net
la-familia.fr

1- GENERAL

1.1- Show duration: 60 mins approx. Duo piano / image + juggling, with David Babin (babx) on piano, Adrien Mondot on video and juggling.

1.2- Touring team: 2 artists, 1 stage manager, 1 production.

1.3- Equipment transport: 3m³ van

1.4- The consistency in the quality of our video projections and visual effects should be guaranteed by a maximum darkness in the venue: we shall require full collaboration of the venue staff to reach this maximum darkness, in the interest of the performance.

1.5- Audience layout: video images are projected onto the floor, so all seats below stage level must be closed for visibility reasons.

1.6- The sound booth must be placed in the room, on the axis of the stage, with full visibility of the stage for all operators. The video control board, operated by artist Adrien Mondot, is visible on stage right.

THIS TECHNICAL DATA SHEET IS A CONTRACTUAL DOCUMENT.

PLEASE CONTACT US IF YOU HAVE ANY PROBLEMS.

ANY ADAPTATION MUST BE APPROVED BY OUR TECHNICAL TEAM.



Adrien M & Claire B

Adrien M & Claire B
La Familia

contact@am-cb.net
contact@la-familia.fr

adrienm-claireb.net
la-familia.fr

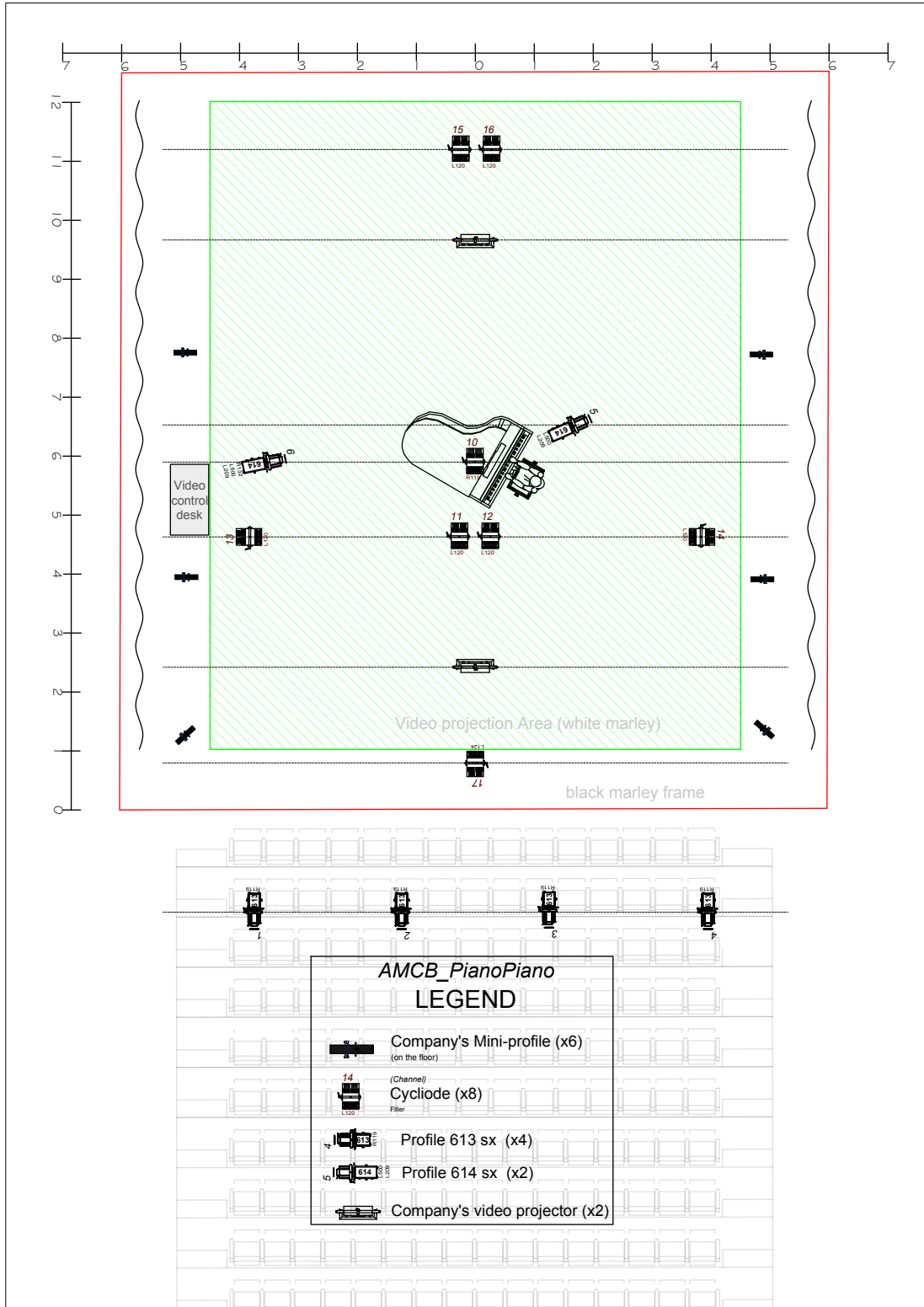
2- DESCRIPTION, SET, BACKLINE

We project video on the entire stage floor, using 2 video projectors supplied by the company, in ceiling mode, straight down. One upstage, the other downstage (or stage left/stage right, depending on venue configuration). The projection surface, a white marley dance floor supplied by you, must be clean, in good condition, and framed with black marley or carpet.

A Steinway Grand piano (around 2m long) is in the center of the stage.

Adrien Mondot manipulates image and light from a minimalist video control desk in the wing stage right. During the show, he alternates between control and juggling on stage.

The lighting consists of 6 LED profiles supplied by the company and a basic lighting plot made of 8 cyclodes and 6 profiles, managed with your lighting desk.





Adrien M & Claire B

Adrien M & Claire B
La Familia

contact@am-cb.net
contact@la-familia.fr

adrienm-claireb.net
la-familia.fr

2.1 - VENUE REQUIREMENTS:

2.1.1 - Stage dimensions (see plans in Appendices 1 & 2)

Minimum

- :: 8m deep, from proscenium nose to back wall.
- :: 9m wide wall to wall
- :: 7m frame opening
- :: 6m50 height under fly bars

Ideal

- :: 12m deep, from apron to back wall.
- :: 12m wide wall to wall
- :: 9m frame opening
- :: 8m height under fly bars

2.1.2 – Set design

- :: White dance floor covering the entire projection area - optimum 9m opening x 11m depth (unrolled before our arrival).
- :: Framing the projection surface: black dance floor or black carpet. Ideally done after the video projectors have been set up.
- :: bare back wall or black backdrops, depending on the type of wall.
- :: German Tabs

2.1.4 – Backline

- :: A black Steinway Grand piano (around 2m long), tuned on the day.

2.1.4 – During set-up

- :: An aerial work platform with a minimum working height of 8m.



3- LIGHT

3.1 – Light control

We control our projectors from Adrien Mondot's video control desk using DMX. Your projectors will be on your set.

3.2 – VENUE REQUIREMENTS

- 3-point DMX links between our video control room and our LED cut-outs.
- For public entrance, end of show and bows:
 - o 8 Cycliodes on 8 circuits (Filtres : 6x L120 ; 1x L124 ; 1x L119)
 - o 4 profiles 613sx on 4 circuits (Filtres : 4x R119)
 - o 2 profiles 614sx on 2 circuits (Filtres : 2x L500 ; 2x L209 ; 1x R132)
- 6 directs for our 6 LED profiles on the floor.
- One splitter to connect these profiles
- 2 directs (2 sockets each) for our 2 videoprojectors on flybars: 1 upstage, 1 downstage.
- 1 direct (multi-socket) at the video control desk, stage right.

4- SOUND

THE MIXING DESK MUST BE IN THE ROOM, ON THE AXIS.

4.1 – VENUE REQUIREMENTS

4.1.1 – Sound system

:: Professional front-of-house speakers system, adapted to the venue at the stage frame level

4.1.2 – Control desk

:: 1 digital mixer 16 in / 16 aux / 16 out, with parametric equalizers, (like Yamaha QL1)
:: 1 littlite

4.1.3 Microphones

:: 2x AKG C414 for piano
:: 1x AKG C535 for voice
:: 1 DI

We bring clamps to attach the microphones to the piano, a piezo pickup system (connected to the DI), and an XLR to flat RJ45 multipair to hide the audio links on stage. (Microphones can be adapted to suit the park offered by the venue)



Adrien M & Claire B

Adrien M & Claire B
La Familia

contact@am-cb.net
contact@la-familia.fr

adrienm-claireb.net
la-familia.fr

4.1.4 - Intercom :

- :: 1 intercom link between control room and stage
- :: 11 intercom in control room and 1 on stage

5- VIDEO

5.1 – THE COMPANY COMES WITH :

- :: Two video projectors + rigging systems
- :: Video links
- :: Video control desk (Laptop + controllers)
- :: 6 spotlights (LED profiles)
- :: Props

6- COSTUME / ACCUEIL

6.1 - THE COMPANY COMES WITH:

- :: 2 men's suits (pants + shirt + tee-shirt) in cotton.

6.2 – VENUE REQUIREMENTS:

- :: 2 lockable dressing rooms with shower (or access to a shower)
- :: 2 large towels
- :: 2 small towels
- :: A watering place near the plateau
- :: Even light catering is welcome

Please remember to wash costumes after each performance.



7- SCHEDULE / STAFF

We have a single technician on tour who handles the general direction, video set-up and sound. A light manager from your side will be in charge of lighting the show, under the direction of our technician. Please allow time for your lighting manager to record our lighting cue list into your lighting desk.

Typical schedule

PRIOR TO OUR ARRIVAL :

- Pre-fitting is required for the white dance marley, curtains and lighting.
- Marley will only be taped on D-day, after the set has been installed.

DAY 1 :

- Our team arrives.
- Secure truck parking needed, if the set is brought by road.
- If we arrive early enough in the day, we can go to the theater to check pre-fitting.
- If possible, unload the truck.
- The piano must be delivered on DAY 1, or latest on DAY 2 at 9am.

DAY 2 :

STAFF REQUIREMENTS	Stage manager	Rigger	Lighting /electric manager	Sound manager
9 a.m. – 11 a.m. Light, video and sound setup	1	1	1	1
11 a.m. – 13 p.m. Video focusing	1	1	1	
14 p.m. – 16 p.m. Sound, video and stage adjustments, light focusing	1	1	1 / 1	1
16 p.m. – 18 p.m. Soundcheck, rehearsal	1		1	1
18 p.m. Piano tuning				
20 p.m. Show	1		1	1
Take down : 1h		1	1	1