

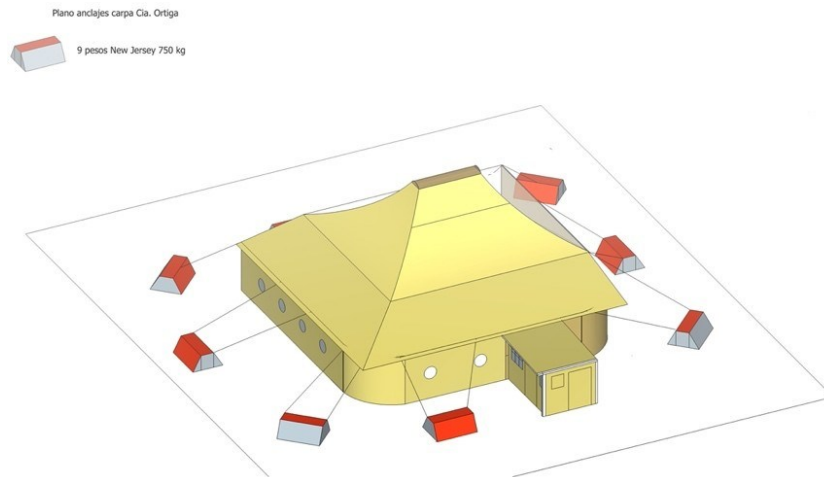
AN-KI | Technical Data Sheet

An-ki is an immersive installation for all audiences, starting at the age of 8, that can be performed both outdoors and indoors.

SPACE

MINIMUM REQUIREMENTS FOR OUTDOOR INSTALLATION

- Surface area: 15x15 metres, no slope (maximum 3%), no holes or obstacles.
- Height: 5.5 metres
- 12 anchor points with pegs or pressure anchors or, alternatively, 9 weights of at least 750 kg.
- A van and a three-meter trailer will be parked behind the tent throughout the entire duration of the installation.



MINIMUM REQUIREMENTS FOR INDOOR INSTALLATION

- Surface area: 12x15 metres, on a level ground
- Height: 5.5 metres
- It is a self-supporting structure, no anchoring required
- Space without noise disturbance.

LIGHT AND SOUND

The company provides the lighting and sound equipment needed, but requires:

- 2 x 16-amp electricity points
- Access to a water supply near the tent.

MATERIAL REQUIREMENTS FOR THE SET-UP

- 2 x 1.5 metres standard ladders (minimum)
- 2 x 5 metres stepladders (minimum)
- 2 lifting towers, each supporting 200 kg, with a T-piece for the structure.



AUDIENCE

- The company is in charge of managing the entrance to the space
- Capacity: 27 people for the general audience, up to 30 people for children.

WARNING: An-ki is an immersive show. Occasionally the audience will have to walk or bend down. The show takes place in semi-darkness, with full darkness at certain moments. People with reduced mobility or those who have difficulties in enclosed spaces should contact the company beforehand. It is very important to specify this in the ticket reservation.

Children under the age of 8 are not admitted.

ASSEMBLY AND DISASSEMBLY

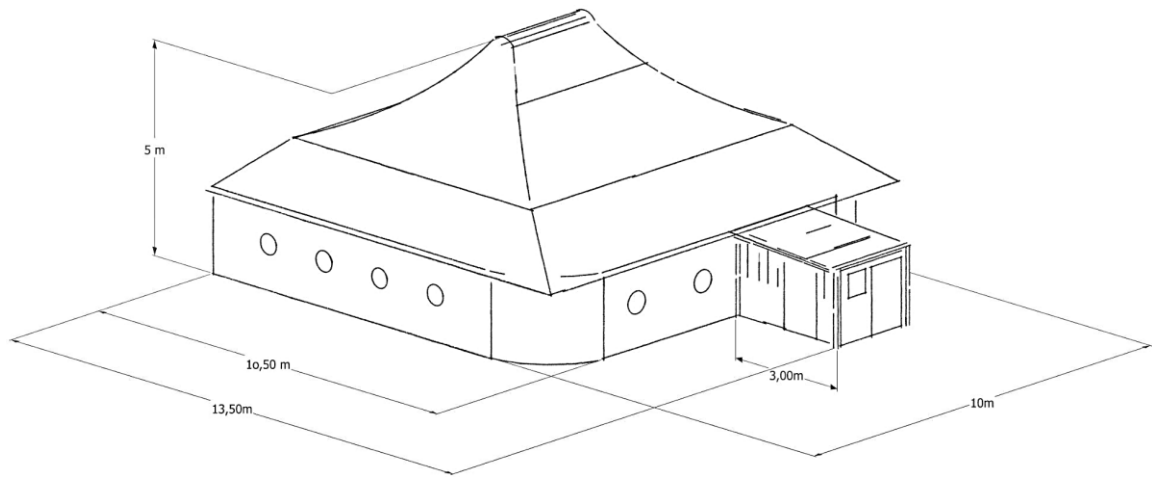
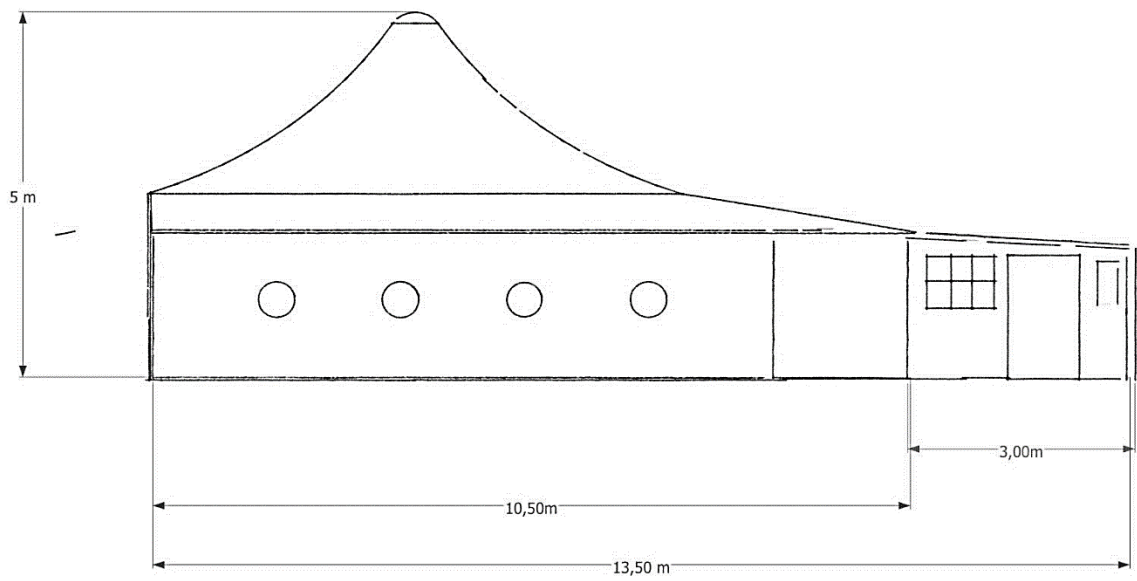
The set-up takes place 2 days before the first performance and requires:

- Direct access for vans to unload and load the equipment
- 2 to 4 support staff for unloading/assembly and disassembly/loading
- A light and sound technician at the venue during the set-up
- Support for the clean-up.

Estimated dismantling time is 6 hours.

OTHER REQUIREMENTS

- A security guard to watch over the tent outdoors.
- Surveilled parking for two 6-metre vans and one 3-metre trailer
- Changing room with toilet and shower for 4 people.
- 2 water bottles of 5 litres each.



CONTACT

TECHNICAL CONTACT

Guillem Geronès – CIA. ORTIGA

ortiga.cia@gmail.com

+34 619 616 642

www.ciaortiga.com

DISTRIBUTION AND PRODUCTION CONTACT

Ana Sala – IKEBANAH ARTES ESCÉNICAS

anasala@ikebanah.es

+34 619951791

www.ikebanah.es

María Gallardo - IKEBANAH ARTES ESCÉNICAS

produccion@ikebanah.es

+34 627 61 51 83

www.ikebanah.es