

# LOO



2017 "FETEN AWARD" TO THE BEST SHOW FOR CHILDREN.

2016 "DRAC D'OR" TO THE BEST SHOW FOR CHILDREN AT  
FIRA TITELLES DE LLEIDA.



Ponten  
Pie





## WHO IS PONTEN PIE?

Ponten Pie is a company founded and directed by the actor Sergi Ots. The company is a platform for this artist to carry out personal projects related to the performing arts. This is the personal and independent space for creation he was searching for.

Ponten Pie's goal is to create unusual performance and staging, reaching out to the audience by directly involving them in the story. In Sergi's creations, the visual aesthetics works in a powerful way. He gives the characters a dramatic truth, in the text as well as in their body's performance, turning each piece into an authentic and characteristic small world. In Ponten Pie's projects, different theatre disciplines combine and speak through a new theatrical language.





The company has been awarded with the following:

**2023 Finalist for MAX award** to the best children, young or family show and for best costume to BAJAU.

**2018 "Best show award"** at International Theatre Festival Faces Without Masks in Macedonia to ÂRTICA.

**2017 "Premio FETEN"** for the best children show at FETEN to LOO.

**2016 "Drac d'or"** for the best children show at Fira de Titelles de Lleida to LOO.

**2014 "Drac d'or"** for the best show concept at Fira de Titelles de Lleida to ÂRTICA.

**2013 "MORITZ award"** for the best show at FiraTàrrrega to ÂRTICA.

**2012 "CREA"** by Trapezi Reus to the cinematic project NORDUD.

**2012 "Drac d'or d'interpretació"** at Fira de Titelles de Lleida to COPACABANA.

**2010 "Aplaudiment a la creació emergent"** FAD awards Sebastià Gasch to COPACABANA.

**2009 "NOF"** Festival Escena Poblenou to COPACABANA.

**2009 "Laboratoris de Creació"** de FiraTàrrrega to COPACABANA.





## LOO ARTISTIC TEAM

Original idea and direction: Sergi Ots

Assistant to director: Emilie De Lemos

Script: Sergi Ots and Emilie De Lemos

Actress: Natàlia Méndez

Set design: Adrià Pinar, Sergi Ots and Emilie De Lemos

Set construction and artifacts: Adrià Pinar and Pau Seguí

Costume design: Marcel Bofill and Nahoko Maeshima

Lights: Adrià Pinar

Technician: Pau Segalés

Photography: Sergi Ots

A Production between:  
Ponten Pie & Festival El Més Petit De Tots

With support from:  
ICEC. Generalitat de Catalunya /  
Teatre Sagarra de Santa Coloma de Gr. /  
La Sala Teatre Miguel Hernández de  
Sabadell.







## PRESENTATION OF THE PROJECT

LOO is the third show of the company, a project born thanks to the proposal from "Festival El Més Petit De Tots", a festival that devotes its program to scenic proposals intended for children between the ages of 0 to 5, to "Ponten Pie" to undertake the self-produced show in the 2015 edition of the festival. A project that has continued in the line of the company, an unconventional show where actors and audience share the same space. Where the visual poetry of the company could have a presence and offers an unusual, quality theatrical proposal for the younger age groups.

In addition, and as it is now usual in the company's projects, the capacity would be limited, in this particular case to 70 people. A most important fact for us, so that audience can enjoy and experience the show in a more direct way, and moreover when considering that perhaps for many of them, because of their age, this is likely to be their first visit to a theatre. As such, has to be an excellent "first time".

Creating a stage where actors and spectators share the same space, and where children and parents could sit freely around the scene, makes for a most fulfilling experience among families that strengthen their emotional relationships.

LOO is a play of great visual power, and minimalist, where the plasticity evokes unprecedented images of the desert and its formation.

Welcome to LOO.





## THE SHOW

"Loo is a strong, hot and dry wind that runs on summer evenings from the western region of the Indo-Gangetic plain. It creates itself with extremely low levels of humidity and high temperatures. Loo also dehydrates and dries vegetation."

LOO besides being the name of a wind, is the name of our main character, the humanization of this element.

The performance shows a vision of its hard work to push the sand dunes across the desert, devastating wetlands, seas and oceans that are in its path, leaving ships paralyzed amidst a sea of sand, eliminating forever its ability to sail. Intended to children from 2 to 5 years old, the show is an unconventional and sensorial proposal, without text. It is developed as an on-stage show that takes 30 minutes where the spectator is located in the middle of the scene, inside a sunken 6,5m x 7,5m ship in the sand of the desert.

A poetic and unknown document that takes a closer look on how and why the wind can form a desert.

TEASER: <https://vimeo.com/147638283>

# TOUR

LOO has been in several national and international festivals like Festival El més petit de tots, Fira de Titelles de Lleida, Fira Tàrrrega, FETEN, Festival Grec, Mon mouton c'est un lion, MOMIX, Imaginate, Zigu Zajg and Imaginique and has been touring for a lot of countries like Spain, France, UK, Netherlands, Germany, Switzerland, Finland, Malta, China, Japan or Singapore.



## THEATRE CRITICS HAVE SAID:

*"The company Ponten Pie, directed by Sergi Ots, gets an empathetic and assertive result that not only achieves to captivate the interest of the youngest ones; besides, it invites them to go on watching, touching, smelling, feeling, experimenting.(...)Loo has been a brief, sensorial and exciting gift that has left on us a big smile in our bodies and a will to get inside a boat and play, play with all the elements until transform them in pure poetry. This project is an intimate, playful and oneiric journey that allows enjoying to all family of the best visual theatre for children."*

**Irma Borges in Titeresante**

*"...it is going, for sure, stimulate (at children) their senses and their imagination through, above all, a delightful aesthetics stained by browns and blues that makes fly the fabrics and touch the sand in a melodic way. Only need to catch the silence and take a look into the faces of the young ones and the will of touching the sand -pieces of cork- with their hands, to prove that they are hypnotized. The fact of being seated inside the set -that evokes a ship-enhances the proximity and the immersion in this poetical adventure that captivate them during 30 minutes."*

**Núria Cañamares in Recomana.cat**





## TECHNICAL DETAILS

This data sheet forms an integral and essential part of the performance contract. The presence of a responsible and informed person that is aware of all of the technical details will be required, from the time of arrival of company staff until the end, when everything is taken down. The technical conditions herein described refer to the needs of the show. In case these conditions cannot be held, we ask to contact the production manager or head technician of the company.

### SET UP AND TAKE DOWN

**30 min. unloading** = 2 people unloading/loading +2 Company staff.

**Set up 5h** = 1 light and sound technician, 1 machinery technician  
+2 Company staff.

**Take down 2h** = 2 people unloading/loading +2 Company staff.

### RUNNING TIME

30min (without interval).

### CAPACITY

Family performances: 70 people.

School performances: 100 people.

### SET DETAILS AND STAGE

Loo is a show where audience sits directly into the set. The set has horseshoe form evoking the shape of a boat. There are wooden planks and benches where the audience sits and a central area plenty of cork where the action takes place. Also, a mast with its own iron foot which is placed in the back of the cork area, a box full of cork which is used to do a rain effect during the show and it is hanged in the bars and, a rope fixator which is placed next to the technician table. The technician does two movements during the show and that is why necessary his table to be at the same set level and close to it.





Stage needs:

- Minimum stage dimensions: 7m width x 8m length.
- A table with black cloth to place the lighting control board + sound control (computer + table).
- Weights (70kg) to fix the ropes portable fixator and the basis of the mast.

## **LIGHTING**

26 Dimmer channels

13 PC 1KW

5 PROFILES 15°-35° 1KW+2 IRIS

5 PROFILES 25°50° 1KW

3 PAR 64 (lamp CP62/num.5)

3 Channels on floor level to connect fans brought by the company.

## **SOUND**

4 self-powered speakers (in case of a non-conventional space, we can use the PA) at stage level with tripod.

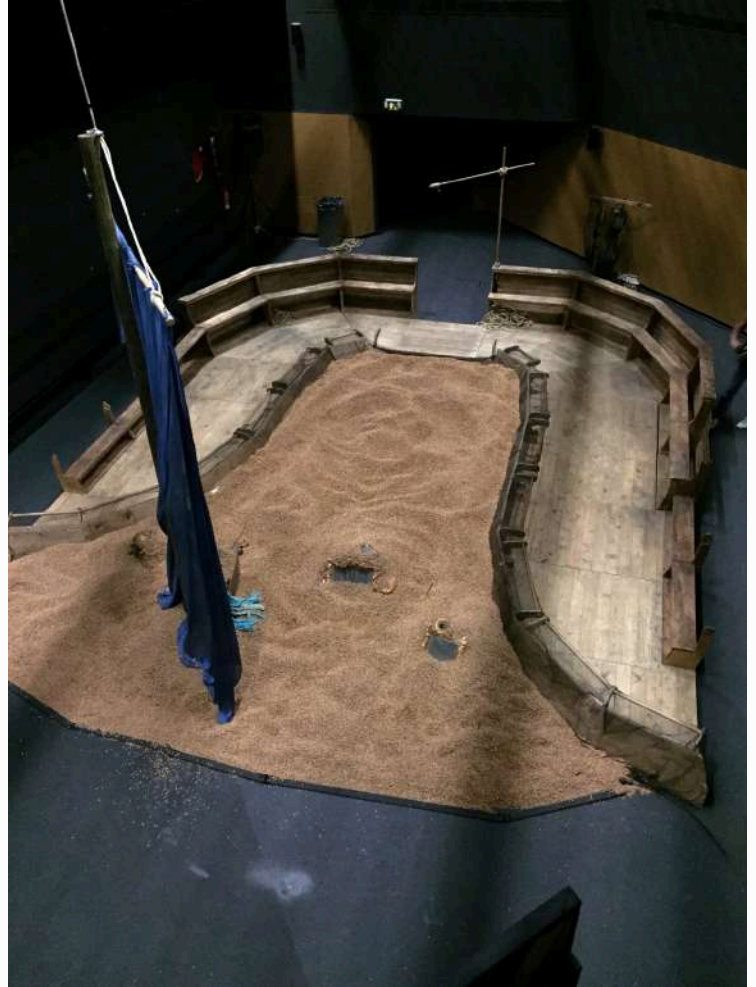
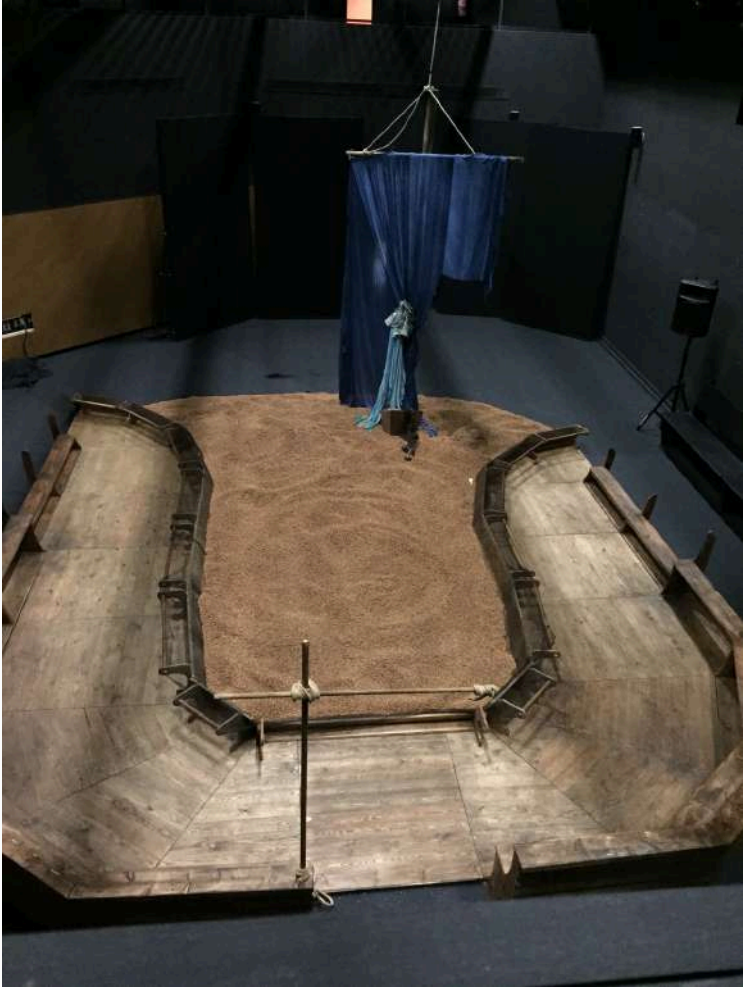
Stereo audio signal must be at stage level (sound control); Jack or XLR connection.

Light and sound are controlled by a technician from the stage, therefore it will be necessary to have a dmx signal (5pin) and sound input at this location.

The company brings the sound table, the computer, Enttec USB Pro. The show runs on "QLAB".

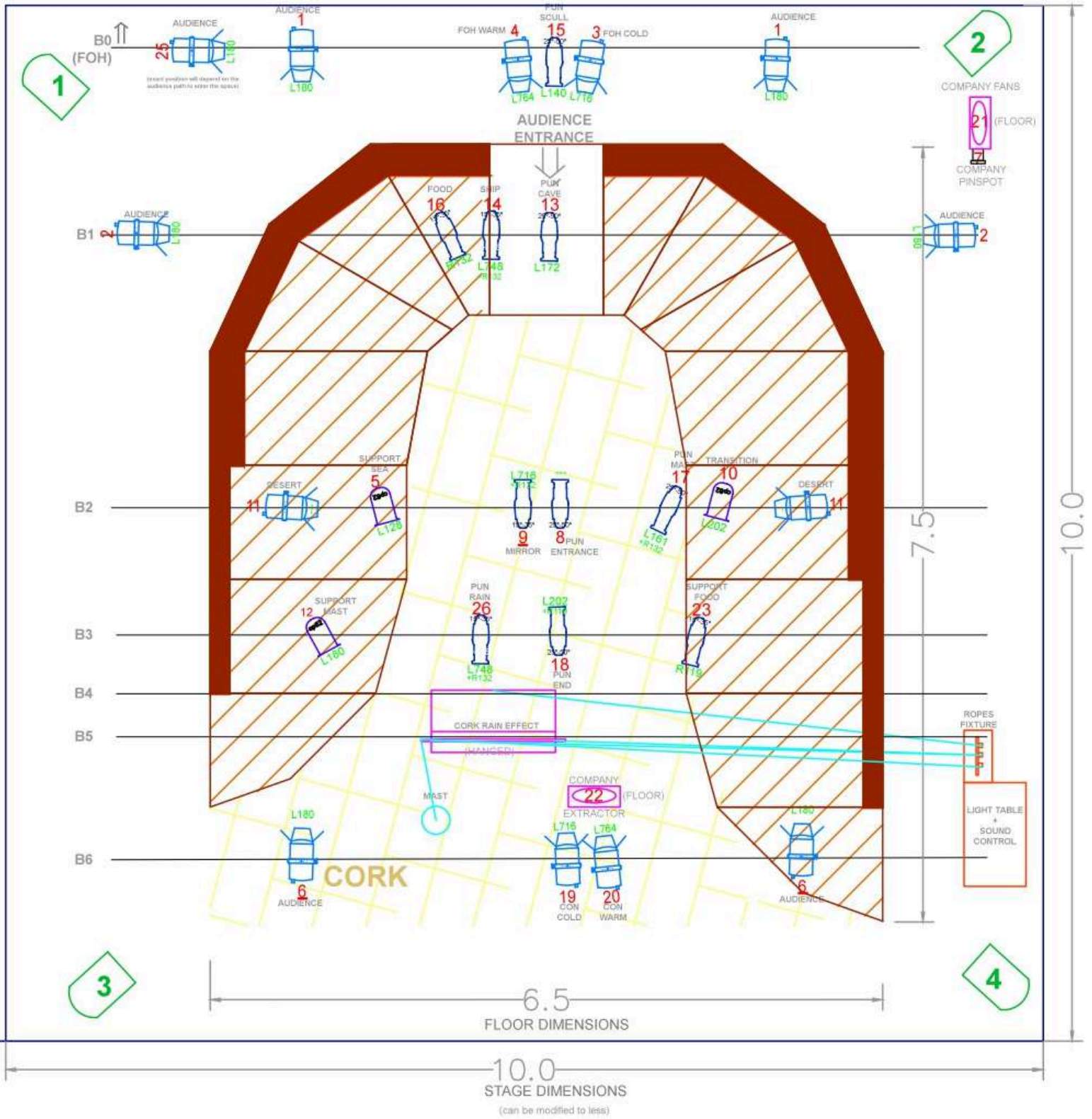
A generic lighting plan is available at the end of this document.

## SET DETAILS





# LIGHTING GENERIC PLAN





# Contact



**Ana Sala Montoro**

***Ikebanah Artes Escénicas***

+34 619 951 791

anasala@ikebanah.es | facebook.com/ikebanah.artesescenicas

**[www.ikebanah.es](http://www.ikebanah.es)**

With support from:



Generalitat de Catalunya  
**Departament  
de Cultura**