

## LOO TECHNICAL RIDER

THE SHOW AND SET DETAILS	<p>LOO is a show for 2 to 5 years old children where audience sit directly into the set. It takes 30 minutes.</p> <p>The set has horseshoe form simulating the shape of a boat. There are wooden planks and benches where the audience sits and a central area plenty of cork where the action takes place. Also, a mast with its own iron foot which is placed in the back of the cork area, a box full of cork which is used to do a rain effect during the show and it is hanged in the bars and, a rope fixator which is placed next to the technician table. The technician does two movements during the show and that is why necessary that his table be at the same set level and closed to it.</p>
LOAD IN AND SET UP	5h.
RUNNING TIME	30min (without interval).
PREPARATION BETWEEN PERFORMANCES	45min.
STRIKE AND LOAD OUT	2h.
SET DIMENSIONS	<p>6,5m width and 7,5m length and 4m height.</p> <p>The bigger set pieces are a mast of 4m high, 4 wheeled boxes (0,80x0,80x1,7m) and two wooden planks which size is 1,25mx1,9m (all the other ones are smaller).</p>
COMPANY ON TOUR	<p>1 Director/Producer.</p> <p>1 Actress.</p> <p>1 Technician.</p>
VEHICLE ON TOUR	<p>1 van of 7m length x 2,8m height.</p> <p>Parking will be required at the venue from the arrival to the departure of the company. Please, notify the company if there are no parking facilities.</p>

## STAFF NEEDED

**The presence of a responsible and informed person that is aware of all of the technical details will be required, from the time of arrival of company staff until the end when everything is dismantled.**

2 People to load in and load out.

2 Sound/Light technicians.

2 People to set up and strike.

2 Ushers.

1 Stage-manager.

Cleaning staff for the end of the last show.

It will be an election by the theater if the same people could make the different tasks quoted before.

Depends on the technical characteristics of the venue and the set-up time available, the company reserves the right to ask for more staff to achieve the set up in good conditions and time needed for the show.

## LOAD IN AND LOAD OUT

Loading area and all the way to the venue must be free of obstacles (vehicles included) that could avoid the load in or load out during the time agreed.

The access to the venue must be at the same loading level or by elevator. If it is not the case, there would be needed two more people to load in and load out.

If needed, the venue must manage the parking permits, street closures, and traffic signals, etc., to do the load in and load out.

## STAGE

STAGE	IDEAL	MINIMUM
Width (m)	10	7
Length (m)	10	8
Height (m)	7	3

PROVIDED BY THEATER		PROVIDED BY COMPANY	
1	Table of 1m width approx. and a chair for the technician.		Set (cork, wooden planks and benches, box rain effect, mast and its foot and, an iron portable rope fixator).
70	Kg weights for the iron portable rope fixator (also could be fixed on the floor) and the mast.		
	Linoleum for the floor in case needed (7m x 6m).		Pulleys and ropes to set up scenography's elements hanged on bars.

The stage must be free of materials and objects.

Once the cork is placed is not allowed to step into it with street shoes. It will be needed the use of plastic bags for shoes provided by the company. Cork is vaporized with water between performances in order to reduce dust with a back sprayer brought by the company. Also, the wooden planks have an iron frame in contact with the floor. The venue must decide and value if a linoleum is needed.

## LIGHTING DETAILS

PROVIDED BY THEATER		PROVIDED BY COMPANY	
13	PC 1000W.	1	Pin spot light.
10	PROFILES 25° 50° 1000W.	2	Ventilators.
		1	Extractor.
3	PAR 64 (CP92/Nº5).	1	Enteccc USB Pro.
26	Dimmer channels.	1	Laptop Macbook Pro.
			Light filters.

Even if the company reserves the right to slightly change some position of lighting once arrived to the venue a pre-hang of lighting will be appreciated.

The technical control must be at stage level as close as possible to the set. Lights and sound are controlled with the same computer of the company so DMX (5 pin) and audio signal would also be required at stage level.

The company provides the computer and the show runs on QLAB.

The 2 fans and 1 extractor provided by the company are to make wind during the show and must be connected to dimmer channels.

The company use plugs and sockets of type F (the ones use in Spain). In case the venue uses others, must provide 5 adapters.

*\*Generic lighting plan attached at the end of this document.*

## SOUND DETAILS

PROVIDED BY THEATER		PROVIDED BY COMPANY	
4	Speakers/Monitors at stage level with tripod.	1	Sound table + computer.
	Audio signal at stage level (sound control).		

#### CAPACITY

Family performances: 70 people.

School performances: 100 people.

The set is adapted for two wheelchairs per performance. Please, notify the company before the show to facilitate their location. If the number of wheelchairs exceed, it is possible their location in other areas but reducing the capacity as long as the company will be notified in advance.

#### BACKSTAGE REQUIREMENTS

1 dressing room with mirror and shower.

Access to laundry washing and drying facilities.

Bottle of water for all company members.

#### THE PERFORMANCE

Due to set characteristics the entrance of the audience to the stage will be at the time agreed avoiding children to wait inside the set for too long.

Latecomers will be not permitted. If it is clear that there is going to be latecomers, the company prefers to hold the show by around 5 minutes to limit any disruptions.

No photography is allowed during the performance.

No eating or drinking in the space.

Audience are not allowed to get into the performing area where the cork is.

Audience members can go in and out to the toilet accompanied by theater ushers.

If children become upset and it is clear that they are not going to settle down, action from ushers should be taken to encourage the parents to either take their child to the back or out of the space.

#### CONTACT

Production.

[produccio@ponten-pie.com](mailto:produccio@ponten-pie.com)

Mobile phone: +34 606 65 75 84

Sergi Ots Gil. Artistic director.

[info@ponten-pie.com](mailto:info@ponten-pie.com)

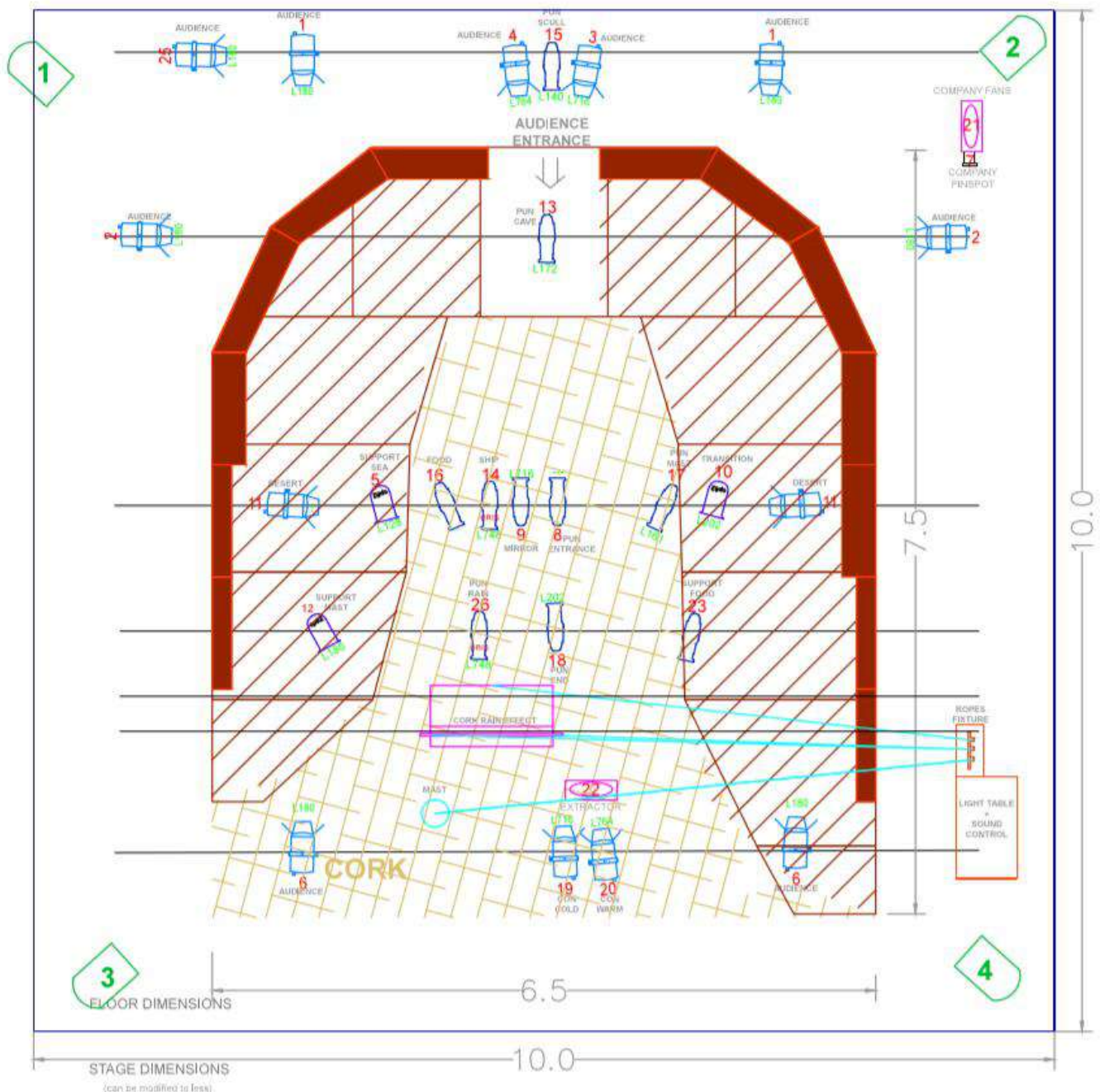
Mobile phone: +34 644 36 11 80

#### **DISTRIBUTION:**

**Ana Sala - Ikebanah Artes Escénicas**

[anasala@ikebanah.es](mailto:anasala@ikebanah.es) - Tel. +34 619951791 / 960090504

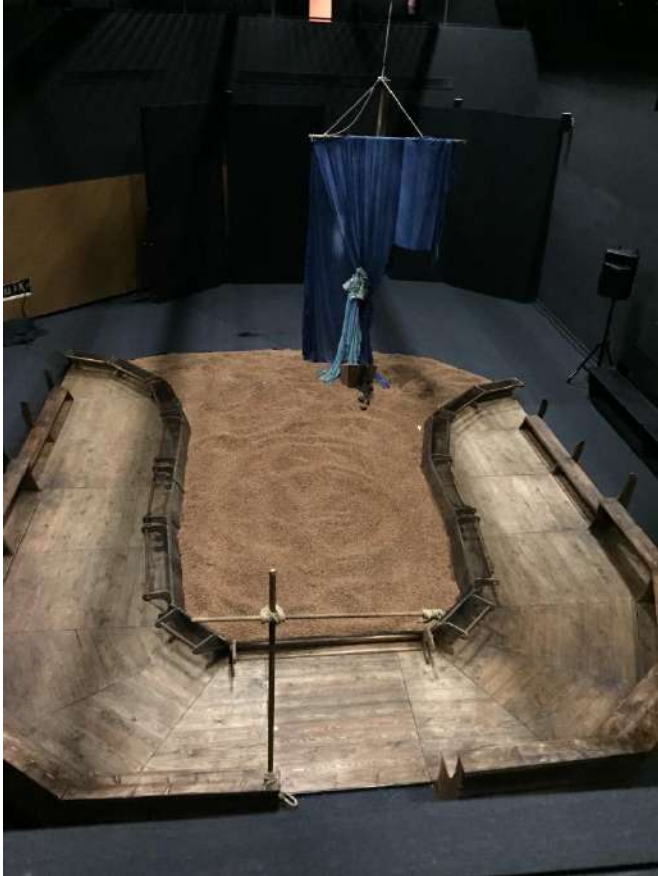
# GENERIC LIGHTING PLAN AND SET



This is a generic lighting plan. Please, send the venue plans to the company (in Autocad preferably) in order to do a specific to the venue.

The company express its will to technical adapt as possible to each venue.

SET PICTURES



Signed by:

ORGANIZATION THEATER /FESTIVAL

COMPANY  
Sergi Ots Gil