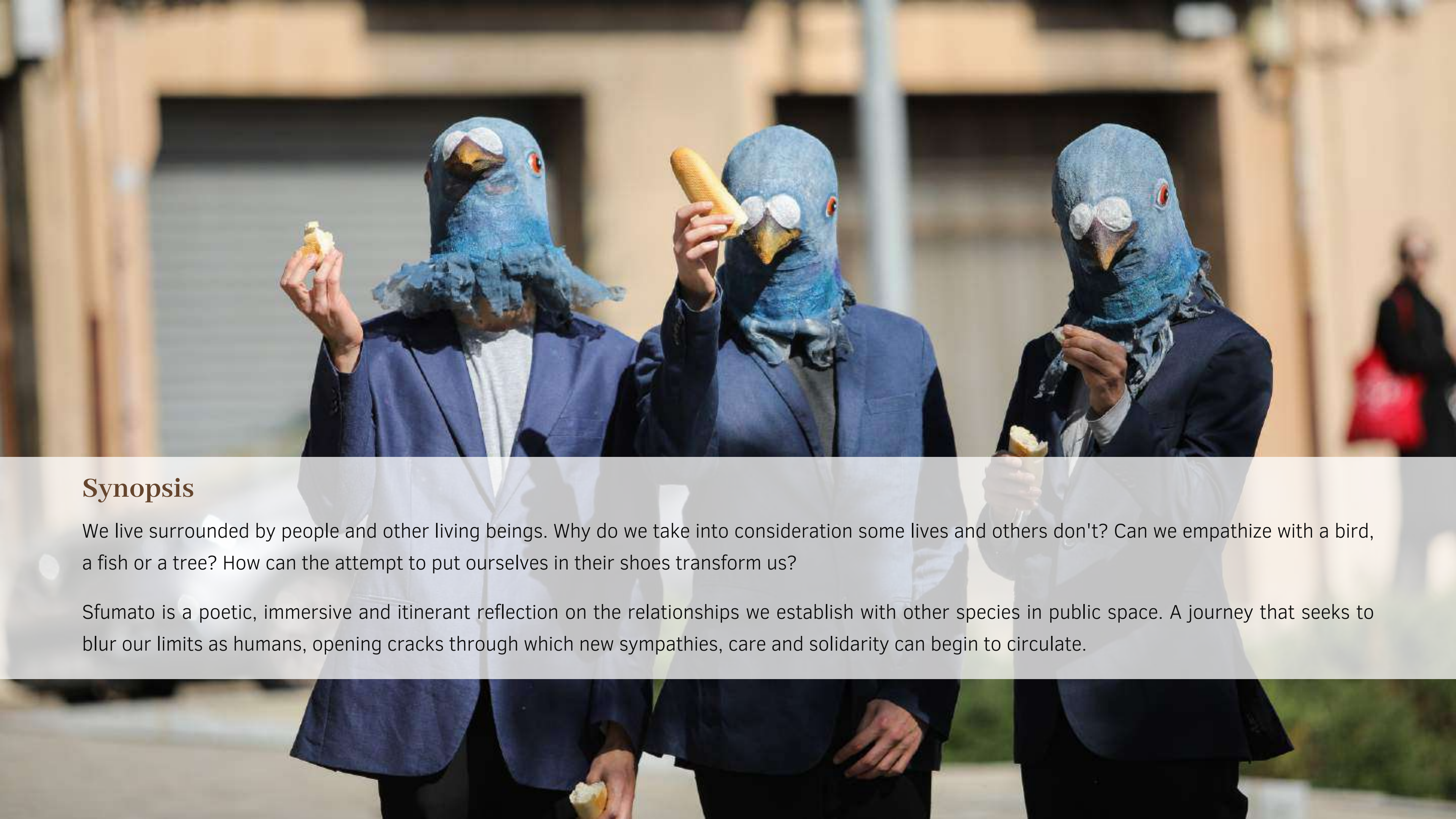


SFUMATO

(rehearsing for the fall of the outlines)





Synopsis

We live surrounded by people and other living beings. Why do we take into consideration some lives and others don't? Can we empathize with a bird, a fish or a tree? How can the attempt to put ourselves in their shoes transform us?

Sfumato is a poetic, immersive and itinerant reflection on the relationships we establish with other species in public space. A journey that seeks to blur our limits as humans, opening cracks through which new sympathies, care and solidarity can begin to circulate.



Edan Vedruna
Peix Fresc - Marisc i Congelats
Marcat de la Guineueta
Passeig d'Isidre de
Barcelona
Telm. 895 791 007

IR
06-2023



AN-NOO
SUPERME



Concept

Sfumato reflects on how we relate to those who are different from us, focusing on the other species with which, with more or less awareness, we coexist in the urban public space.

Often, our Western anthropocentric view makes us feel separated from the world and other living beings. Located at the top of a fictitious pyramid, we tend to see others as a resource to be exploited, as an ornament to be enjoyed, or as a nuisance to be eliminated.

Sfumato is an invitation to abandon this gaze and to try, even for a moment, to put ourselves in the skin (in the feathers, scales or bark...) of the other, trying to see the world from their own perspective.







Format

Sfumato is situated between itinerant street theatre, site-specific and land art. It is a piece with a visual dramaturgy, where the body language and the composition in space are predominant. However, the sound space and the text are also present, in the form of posters, graffiti, voiceovers...

This experience is guided by hybrid characters: half human-bird, plant, fish, tree... built by working with different types of masks.

For each context, we build a journey through different spaces that we fill with poetic, surreal, shocking, participatory situations... and with a sense of humor.





Singularity of the proposal

For each occasion we look for spaces that could accommodate the different pieces of the structure, and make a custom adaptation.

For each adaptation, therefore, we need a small prior residence, in which we also like to include people from the territory, offering them a work session and the possibility of participating in the show.

This way we achieve to increase the social impact of the proposal, while at the same time we grow its visual and surprising force, presenting a unique and unrepeatable final result.





Information

Duration: 50 minutes.

Space: outdoors.

Format: static and itinerant.

Public: all publics.

Language: Catalan /Spanish /French /English.

Audiovisual

Different adaptations: [HERE](#)

One complete adaptation: [HERE](#)

Press and reviews

"Magic breaks logic and leaves a smile of disbelief and lucidity on the viewer. It allows us to imagine much more than any interactive game of screens. [...] Is it just a joke? Is it an attempt at visual poetry? It is an unusual theater that invites us to leave the passive zone of the spectator and that achieves it, through simplicity"

Jordi Bordes, [Recomana.cat](#)

"Doves giving breadcrumbs to humans is already a brilliant idea, but a reversible text where first some complain about others and then it's the other way around is even more so. [...] Itinerant shows do not consist of simply moving the audience from one place to another. Llum de Fideu knows how to visually create very powerful images and take full advantage of each location. Characters such as the plant woman, the old puppet or the trees with arms say much more than many pages of text. We will be attentive to Llum de Fideu."

Oriol Puig Taulé, [Núvol.com](#)

"A highly refined street show starring the thoughts of a group of pigeons and other animals with which we share the urban space. A simple and honest proposal with a lot of potential to tour all the street festivals in the country and beyond."

Manuel Pérez, [Entreacte.cat](#)



Casting

Artistic direction: Anna Claramonte y Marc Guillén.

Performers: Anna Claramonte, Marc Guillén, Mauricio Sierra, Francesco Sinopoli.

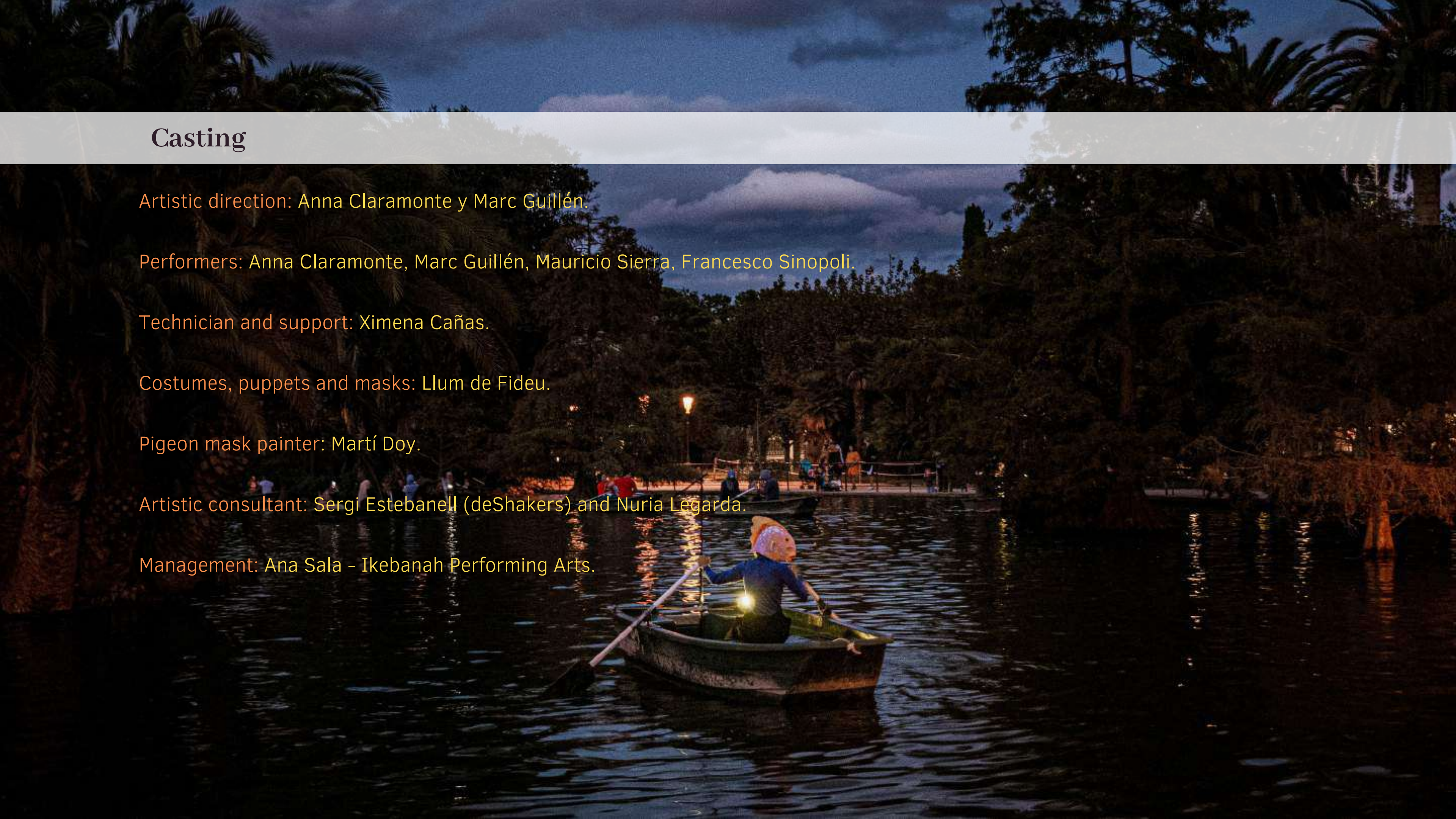
Technician and support: Ximena Cañas.

Costumes, puppets and masks: Llum de Fideu.

Pigeon mask painter: Martí Doy.

Artistic consultant: Sergi Estebanell (deShakers) and Nuria Legarda.

Management: Ana Sala - Ikebanah Performing Arts.





The company

Llum de Fideu (Noodle Light) begins to take shape within the acting studies at the Institut del Teatre of Barcelona, where Anna and Marc present some works together and feel that they share a close way of seeing theater and life.

The company became known in the professional field with its participation in the Embrions 2021 program of the Contemporary Creation Festival Poblenou Scene, where they had a great reception with a first embryonic presentation of Sfumato.

The piece finally premieres at the Mercè Arts de Carrer Festival in Barcelona in September 2022, subsequently passing through festivals such as Escena Poblenou, Sismògraf or Festus.

With Sfumato the company has been finalist in the XXV Critics' Awards of Catalonia, in the New-voice category, and also has won the "Discovery company" award at the Ramonville Festival (France).

With the support of:



Special thanks:

Laura Vinyals, Georgina Majench, Ada Vilaró, Alfred Cases, Eudald Ferré, Albert Boronat, Carlota Subirós, Xesca Salvà, Georgina Viñolo, Margarida Troguet, Josep Cosials, Alina Stockinger i Daniela Poch (cia. Eléctrico 28), Marc Chornet, Adrià Girona, Luzie Ackers (cia Theatre Fragile), Laura Capdevila, Mònica Molins, Fanny Prime, Ricard Soler.

Llum de Fideu:

Ana Claramonte and Marc Guillén.

llumdefideucia@gmail.com

m.: +34 666083508 / 639975643

Management and booking:

Ana Sala.

anasala@ikebanah.es

m.: +34 619951791

