

## Technical Rider – Tumbalafusta

CIA: La Ruta 40

**Tumbalafusta is a close-up family show. Whenever possible, two rows of cushions will be placed at the front so that children in the audience can sit on the floor.**

### Stage Requirements:

- Minimum dimensions: 6m width x 8m depth
- Black linoleum covering the entire performance area
- Black box in Italian-style staging
- Preference for non-elevated stages. If using elevated stages, consider the
- possibility of having the audience on stage.

With an audience in the stands



With an audience on stage



### Sound:

- PA system capable of uniformly covering the audience area.
- 2 sidefills
- Digital sound console with 16 channels and at least 4 outputs

Lighting::

DMX connection within 20m max from the performance area

- **Projectors (adaptable to the venue)**

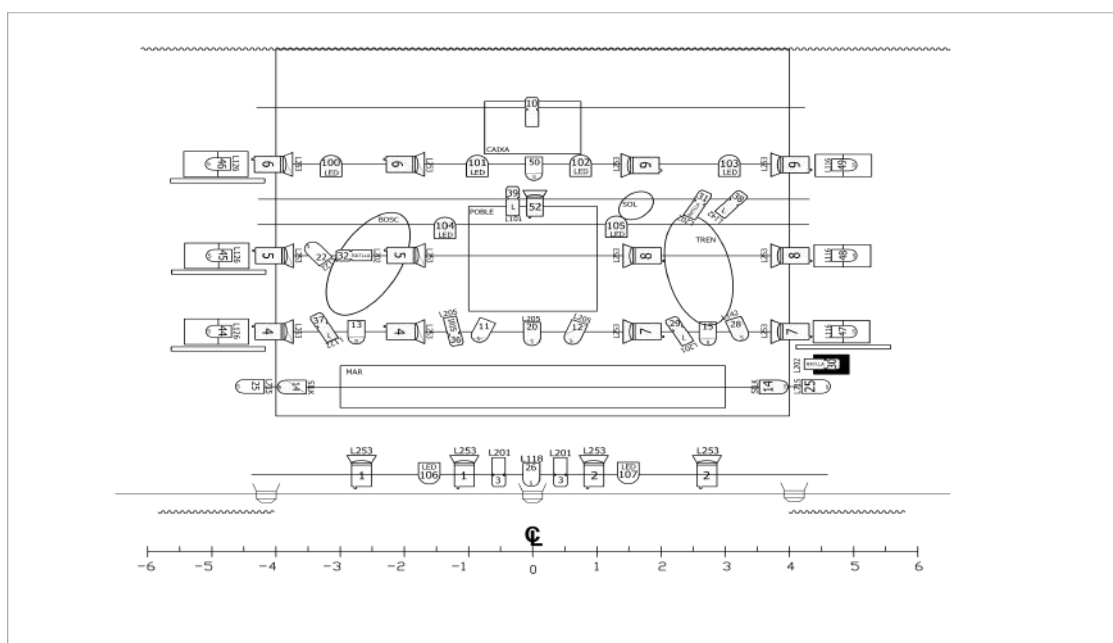
- 19 PAR 64 (nº5, cp 62) with filter holders  
18 PC 1Kw with barn doors and filter holders  
11 Profile spotlights 1Kw with filter holders  
3 Asymmetric floodlights  
1 Iris

- **Structures**

- 1 floor stands  
6 Dance boom structures (height of 150m)

- **Dimming and control**

- 1 programmable lighting console  
48 dimmer channels



**Contact:**

Maria Rovelló (Production): 639 544 353 [produccio@laruta40.net](mailto:produccio@laruta40.net)  
 Esther Porcel (Thecnique): 667 736 564 [epfauguet@gmail.com](mailto:epfauguet@gmail.com)